

**FLEETWOOD.RV**

**Discovery**  
BY **FLEETWOOD.RV**

1 9 9 9

# T HE DIESEL THAT SAYS YOU'VE ARRIVED.

At Fleetwood RV, we've been making America's favorite recreational vehicles for nearly 50 years. We've done it by building honest value, rugged dependability and peace of mind into every one of them. As number one in its class, Discovery is built for those who want all the power and luxury associated with a diesel Fleetwood RV. Besides its generous diesel power and renowned gliding air-ride suspension, Discovery has wonderfully inviting residential accommodations. These interiors feature oak plank flooring, porcelain sinks with Corian® countertops, convection carousel microwave oven, built-in TV with VCR, and optional leather furniture. The sumptuous bedroom has its own television and stereo system that can turn your sanctuary into a private theater. Something else that's special on select models is our EZ Glide™ Room Slide-out System that makes your RV roomier at the touch of a button. Our EZ Store™ Storage System moves with the slide-out room, so you have easy access to storage below. The Discovery exterior is equally distinctive. From the all-new full-fiberglass front-end cap, halogen headlamps and massive wraparound windshield to the bold, dramatic color schemes and optional awning, Discovery says you've arrived. Which is what makes Discovery the first choice of those who want to step up to unsurpassed driving and climbing power in a luxurious motor home.

## 1999 DISCOVERY SPECIFICATIONS

| Freightliner Chassis                     | 34Q    | 36A    | 36R    | 36T    | 37V    |
|--|--------|--------|--------|--------|--------|
| Cummins Diesel Engine                    | 275 hp | 275 hp | 275 hp | 275 hp | 275 hp |
| Wheelbase                                | 208"   | 228"   | 228"   | 228"   | 242"   |
| GVWR lbs <sup>1</sup>                    | 24,850 | 24,850 | 24,850 | 24,850 | 24,850 |
| GCWR lbs <sup>2</sup>                    | 29,850 | 29,850 | 29,850 | 29,850 | 29,850 |
| GAWR (front) lbs <sup>3</sup>            | 9,350  | 9,350  | 9,350  | 9,350  | 9,350  |
| GAWR (rear) lbs <sup>3</sup> (incl. tag) | 15,500 | 15,500 | 15,500 | 15,500 | 15,500 |
| Base Weight lbs                          | 18,700 | 18,640 | 18,650 | 19,420 | 20,330 |

| Dimensions      | 34Q    | 36A    | 36R    | 36T    | 37V    |
|-----------------|--------|--------|--------|--------|--------|
| Length          | 34' 7" | 36' 3" | 36' 3" | 36' 3" | 37' 5" |
| Height          | 12' 1" | 12' 1" | 12' 1" | 12' 1" | 12' 1" |
| Overall Width   | 102"   | 102"   | 102"   | 102"   | 102"   |
| Interior Height | 79"    | 79"    | 79"    | 79"    | 79"    |
| Interior Width  | 96"    | 96"    | 96"    | 96"    | 96"    |

| Liquid Capacities (gallons)     | 34Q | 36A | 36R | 36T | 37V |
|---------------------------------|-----|-----|-----|-----|-----|
| Fresh Water Holding             | 80  | 80  | 80  | 80  | 80  |
| Water Heater with Auto Ignition | 6   | 6   | 6   | 6   | 6   |
| Black Water Holding             | 40  | 40  | 40  | 50  | 50  |
| Grey Water Holding              | 60  | 60  | 60  | 65  | 65  |
| Appliance LPG Tank*             | 25  | 25  | 25  | 25  | 25  |
| Generator LPG Tank*             | 40  | 40  | 40  | 40  | 40  |
| Fuel Tank                       | 90  | 90  | 90  | 90  | 90  |

### Appliances, Standard Equipment

|   |   |                            |
|---|---|----------------------------|
| 22" 3-burner Range                        | 6 Gallon Quick Recovery Water Heater w/D.S.I. |                            |
| .7-cu. ft. Eye-level Convection/Microwave | Furnace 20m BTU/25m (dual)                    | Monitor Panel              |
| 20" TV in Front Overhead                  | Marine Toilet                                 | Folding Range Cover        |
| 13" TV in Rear Bedroom                    | Water Filter w/Faucet                         | Single Lever Galley Faucet |
| Water Heater Bypass                       | Demand Water Pump w/Filter                    | Light/Power Rangehood      |
| 12-cu. ft. Side-by-side Refrigerator      |   |                            |

| Appliances, Options       | 34Q | 36A | 36R | 36T | 37V |
|---------------------------|-----|-----|-----|-----|-----|
| 22" 3-burner Range w/Oven | Opt | Opt | Opt | Opt | Opt |
| Washer/Dryer              | N/A | Opt | Opt | Opt | Opt |

<sup>1</sup> GVWR (Gross Vehicle Weight Rating): Maximum permissible weight of this motor home. The GVWR is equal to or greater than the sum of the unloaded vehicle weight plus the net carrying capacity.

<sup>2</sup> GCWR (Gross Combination Weight Rating): Value specified by the motor home manufacturer as the maximum allowable loaded weight of this motor home with its towed trailer or towed vehicle.

<sup>3</sup> GAWR (Gross Axle Weight Rating): Maximum permissible loaded weight a specific axle is designed to carry.

\*Tank manufacturer's listed water capacity (WC) actual filled. LP capacity is 80% of listing due to safety shut off required on tank.

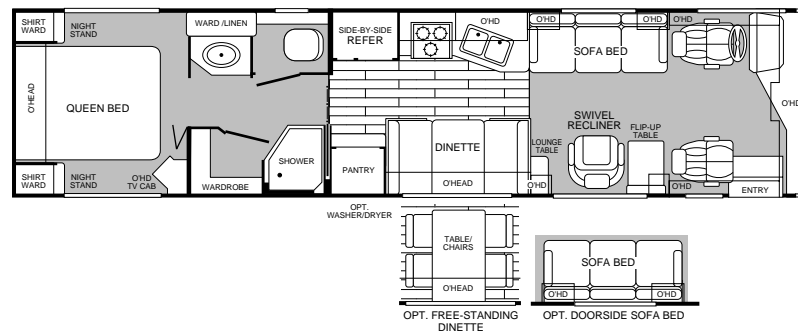
MODEL  
**34Q**

- Living room/galley slide-out
- Island queen bed
- Side-by-side refrigerator
- Swivel recliner
- Dinette or opt'l table w/chairs



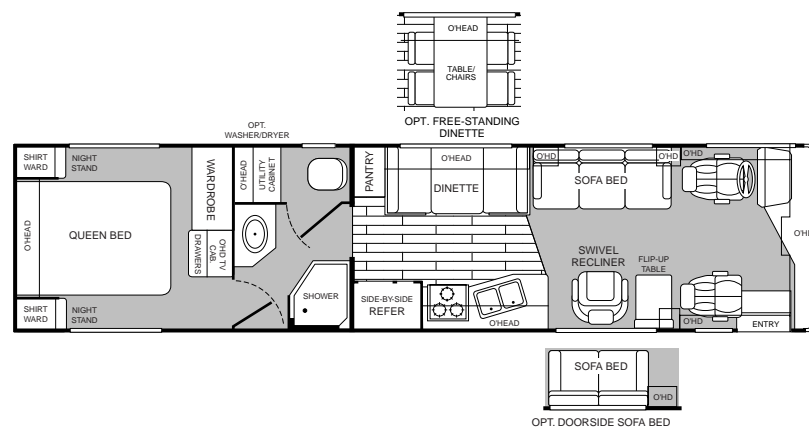
MODEL  
**36A**

- Island queen bed
- Private toilet
- Side-by-side refrigerator
- Dinette or opt'l table w/chairs
- Opt'l doorside sofa bed



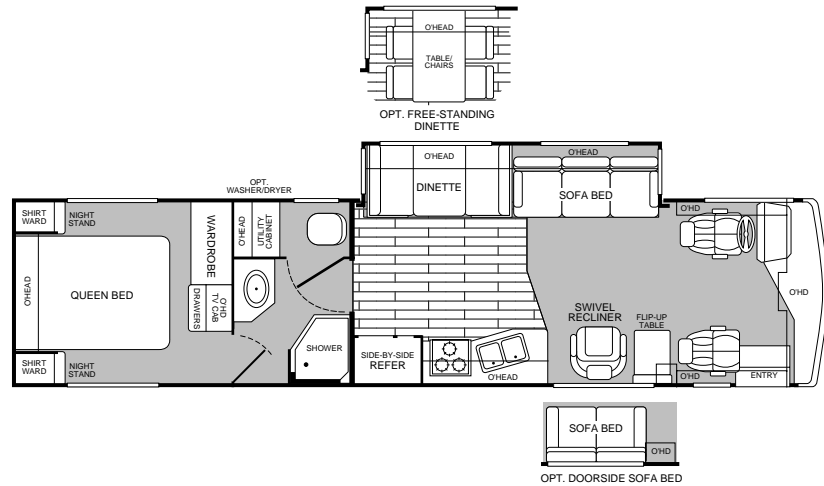
MODEL  
**36R**

- Island queen bed
- Private toilet
- Side-by-side refrigerator
- Dinette or opt'l table w/chairs
- Opt'l doorside sofa bed



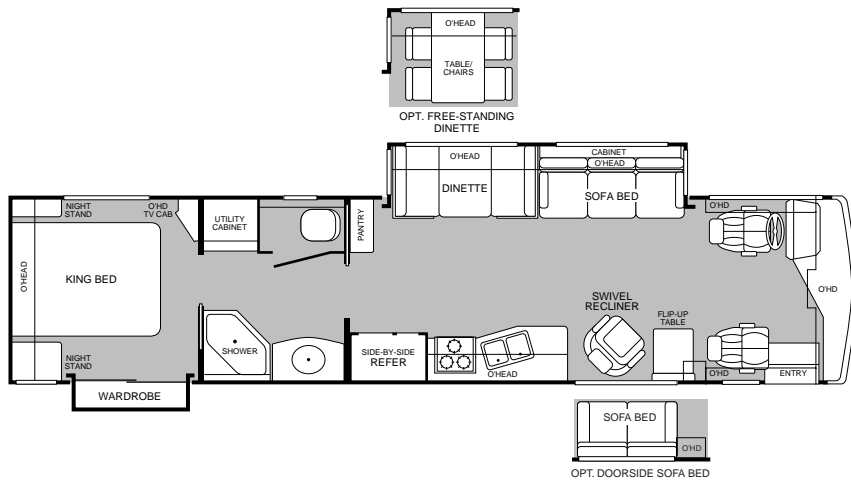
MODEL  
**36T**

- Island queen bed
- Swivel recliner
- Large bedroom wardrobe
- Dual pantries
- Dinette or opt'l table w/chairs



MODEL  
**37V**

- Living room/galley slide-out
- Island king bed
- Dinette or opt'l table w/chairs
- Side-by-side refrigerator
- Opt'l doorside sofa bed



# 1999 DISCOVERY FEATURES AND AVAILABLE EQUIPMENT

## Exterior Automotive and Electrical, *Standard Equipment*

|  |   |                     |
|--|---|---------------------|
| Wraparound Windshield                  | Single Motor Windshield Wiper System            |                     |
| OEM Electronic Cruise Control          | Hydraulic Levelers-Manual                       | Rear Vision Camera  |
| Fiberglass Front/Rear Bumpers          | Radial Tires-Michelin                           | Intermittent Wipers |
| 6.5 Onan® Generator                    | Underhood Utility Light                         | Undercoating        |
| Large Automotive Halogen Headlamps     | Stainless Steel Wheel Simulators                | Mud Flaps           |
| Radio Switch-Main or Auxiliary Battery | Dual 6-volt Battery-217-amp                     | Fog Lights          |
| Trailer Hitch-5,000 lbs                | Remote Heated Rearview Mirrors w/Indicator Lamp |                     |
| Valve Stem Extenders                   | Steel Surface on Firewall                       |                     |

## Interior Automotive, *Standard Equipment*

|                          |                              |                         |
|--------------------------|------------------------------|-------------------------|
| 3-point Front Seat Belts | Reclining Captains Chairs    | Auxiliary Start Circuit |
| Auto AC/Heater Combo     | Battery Shut Off Switch      | Dash Fans               |
| Tilt Steering Wheel      | Soft Surface Automotive Dash |                         |

## Exterior, *Standard Equipment*

|   |  |                               |
|---|--|-------------------------------|
| Full Fiberglass Front-end Cap             | Fiberglass Front Quarter Panels                  | Rubber Roof                   |
| One-piece Engine Access Door              | Fiberglass Rear Wheel Trim                       | Large Viewing Windows         |
| Dual Glazed Windows                       | Full Fiberglass Rear Cap                         | Awning Rail Drip Molding      |
| Power Entry Step                          | TV Antenna                                       | Roof Ladder                   |
| 20' Sewer Hose                            | Black Powder-coated Luggage Door Frames          |                               |
| Luggage Compartment Lights                | Aluminum/Vacubond Luggage Compartment Doors      |                               |
| Roto-cast Luggage Compartments            | Radius Entry Door w/Deadbolt Latch (keyed alike) |                               |
| Lower Body Accent Paint                   | Modular Entry Step Compartment                   | Slider Windows                |
| Hyd. Levelers, 4-point Manual             | Utility Compartment                              | Pass-through Storage          |
| Exterior Shower at Water Pump Compartment | Exterior Assist Handle                           | Remote Heated Rearview Mirror |

| Exterior, <i>Options</i>     | 34Q | 36A | 36R | 36T | 37V |
|------------------------------|-----|-----|-----|-----|-----|
| Awning                       | Opt | Opt | Opt | Opt | Opt |
| Aluminum Wheels              | Opt | Opt | Opt | Opt | Opt |
| Front Mask                   | Opt | Opt | Opt | Opt | Opt |
| Satellite Dish               | Opt | Opt | Opt | Opt | Opt |
| 7.5kw Quiet Diesel Generator | Opt | Opt | Opt | Opt | Opt |
| Upgrade Graphics Package     | Opt | Opt | Opt | Opt | Opt |

## Safety, *Standard Equipment*

|                |                          |                   |
|----------------|--------------------------|-------------------|
| Smoke Detector | Carbon Monoxide Detector | Fire Extinguisher |
| LPG Detector   | Emergency Exit Window    |                   |

## Lighting, *Standard Equipment*

|                       |               |                                |
|-----------------------|---------------|--------------------------------|
| Wall Sconces          | Makeup Lights | Wardrobe Lights                |
| Decor Lights          | Porch Light   | Fluorescent Ceiling /Dual Bulb |
| Incandescent Lighting |               |                                |

## Electrical, *Standard Equipment*

|                       |   |                 |
|-----------------------|---|-----------------|
| Patio Receptacle      | 120v/12v AC/DC Covert. Central Elect. Panel w/Charger |                 |
| 120v/12v Wire Raceway | Water Pump Switching                                  | 6.5kw Generator |

## Electrical, *Standard Equipment Cont.*

|   |                              |                             |
|---|------------------------------|-----------------------------|
| 30-amp Service                                | Wall Switches                | ECC Climate Control         |
| Dual 6v Deep Cycle-217-Amp House Batteries    | Park Cable Reception         | Dual Battery Charge Control |
| Dual Roof High Efficiency A/C w/Solar Charger | 1000-watt Inverter/Converter |                             |

## Interior, *Standard Equipment*

|  |   |                                |
|--|---|--------------------------------|
| 3 Interior Decors                          | Rear Speakers in Bedroom                    | Radius Corner Cabinetry        |
| Wood Trim Tabletops                        | Corian® Countertops                         | Window Coverings               |
| Bathroom Trim                              | Entry Rail (oak & brass)                    | Battery Disconnect             |
| Roller Guide Drawer Slides w/Ship Locks    | Brass Glass Shower Door                     | Large Residential Wood Drawers |
| Bright Brass Door & Drawer Hardware        | Power Bath Vent                             | VCR                            |
| Skylight in Tub/Shower                     | Rear 13" TV/Front 20" TV                    | TV Cabinet-Rear Bed            |
| Molded Tub or Shower w/One-piece Enclosure | Large Slide-out Dinette Bins                | Carpet Pad                     |
| Residential Grade Linoleum at Water Closet | Plankwood Flooring in Galley                | Wall-to-wall Carpet            |
| Vinyl-wrapped Overhead Construction        | Miniblinds & Pleated Shades                 | Pillow Top Mattress            |
| Headboard w/Decorative Mirrors             | Telephone Jack                              | Fantastic® Power Roof Vent     |
| Residential Style Wainscot w/Paneling      | Upholstered Side Dinette Seats w/Camel Back |                                |
| Solid Wood Cabinet Doors & Drawer Faces    | Radio w/Cassette AM/FM/Electronic Tuner     |                                |

| Interior, <i>Options</i>            | 34Q | 36A | 36R | 36T | 37V |
|-------------------------------------|-----|-----|-----|-----|-----|
| Leather Sofa Bed                    | Opt | Opt | Opt | Opt | Opt |
| Dinette Table w/Freestanding Chairs | Opt | Opt | Opt | Opt | Opt |
| Sofa Bed                            | Opt | Opt | Opt | Opt | Opt |
| Power Driver Seat                   | Opt | Opt | Opt | Opt | Opt |
| Leather Power Driver Seat           | Opt | Opt | Opt | Opt | Opt |
| Cedar Lining in Wardrobe            | N/A | Std | N/A | N/A | Std |
| Wood Blinds                         | Opt | Opt | Opt | Opt | Opt |

## Platform Construction and Body Structure, *Standard Equipment*

|   |   |                  |
|---|---|------------------|
| Aluminum & Composite Design                       | Box Vibration Isolators                       | Power Platform   |
| Basement Configuration                            | Vacubond Floor                                | Steel I-Beams    |
| Lightweight Hull Construction                     | Vertical Rear Wall                            | Steel Outriggers |
| Interlocking Aluminum Extrusions                  | Vacubond Walls w/Hi-gloss Exterior Fiberglass |                  |
| Domed Roof w/Ducted A/C System                    | Heated Water & Holding Tank Compartments      |                  |
| All Steel Undercarriage Modular LPG Tank Supports |   |                  |

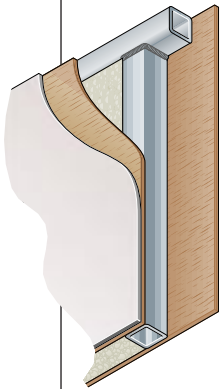
| Slide-out   | 34Q | 36A | 36R | 36T | 37V |
|-------------|-----|-----|-----|-----|-----|
| Galley      | Std | N/A | N/A | N/A | N/A |
| Living Room | N/A | N/A | N/A | Std | Std |
| Wardrobe    | N/A | N/A | N/A | N/A | Std |

| Sleeping Accommodations, <i>Standard</i> | 34Q       | 36A       | 36R       | 36T       | 37V       |
|--|-----------|-----------|-----------|-----------|-----------|
| Convertible Sofa                         | 46" x 76" | 46" x 76" | 46" x 76" | 46" x 76" | 46" x 76" |
| Dinette                                  | 39" x 74" | 39" x 74" | 39" x 74" | 39" x 74" | 39" x 74" |
| Queen Bed                                | 60" x 74" | 60" x 74" | 60" x 74" | 60" x 74" | 60" x 79" |

| Sleeping Accommodations, <i>Options</i> | 34Q       | 36A       | 36R       | 36T       | 37V       |
|---|-----------|-----------|-----------|-----------|-----------|
| Convertible Sofa                        | 46" x 52" | 46" x 52" | 46" x 52" | 46" x 52" | 46" x 52" |

# WHEN THE DUST SETTLES, THERE'S NOT AN RV IN THE WORLD THAT'S TESTED LIKE A FLEETWOOD RV.

If anyone loves to tear an RV apart, it's us. Because at Fleetwood RV nothing's more important than your safety and comfort. While our improvements aren't all visible to the eye, we commit millions of dollars a year in product development and research to build what we believe are the finest RVs in the world.



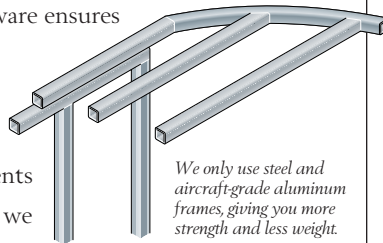
*Vacubond construction ensures that every roof, wall and floor is completely sealed.*

It all starts with advanced computer analysis of new prototype designs. Once built, the prototypes undergo rigorous load bearing and weight distribution stress tests. Stringent load analysis software ensures improved reliability.

Then the relentless testing and re-testing of components begins. In a couple of weeks we can simulate years of real world

use. Slide-out mechanisms have to open and shut thousands of times without a complaint. Seat belts must withstand more than three-ton stress levels without a whimper. And doors have to endure tens of thousands of slammings without losing their composure.

At the end of the day, we've thrown just about anything and everything we can at our units, just to make sure we have the best designed and most thoroughly tested RVs in the world. Then we back them with a limited 1-year/3-year warranty supported by Fleetwood RV dealers throughout the U.S. and Canada. So you have what we believe to be the best-handling, safest, most comfortable RV anywhere.



*We only use steel and aircraft-grade aluminum frames, giving you more strength and less weight.*

Dear Friend,

Here at Fleetwood RV, we have over 200 people working on research and development. But we get our best ideas when we hit the road in our recreational vehicles. Talking to people like you and noticing for ourselves little ways to make RVing more comfortable, more convenient and more fun.



If I had two pieces of free advice to give a friend in the market for an RV, the first would be to get a Fleetwood RV. Not because we need to sell one more. Heck, we sell more than anyone else. But because I know we build the best product out there for the money.

Second, really think about your dealer. He has to be someone you trust for advice, service and accessories. Only the best get to be Fleetwood RV dealers in the first place. Then we work with them to continually improve customer satisfaction. That's why 9 out of 10 owners would recommend their Fleetwood RV to a friend and 9 out of 10 of them would also recommend their Fleetwood RV dealer.

I hope that helps. And I also hope I see you out there, somewhere in this beautiful world, enjoying your new Fleetwood RV while I'm out there doing the same.

John C. Crean

Chairman Emeritus and Founder  
Fleetwood Enterprises, Inc.

*Your local Fleetwood RV dealer is:*

*If your local dealer is not indicated, write to the address below, or call us toll free 24 hours a day at 1-800-444-4905. Or visit our Website at <http://www.fleetwood.com>*

**FLEETWOOD RV**  
America's Favorite Recreational Vehicles

Fleetwood Enterprises, Inc.  
P.O. Box 2875, Van Nuys, CA 91404-2875

Product information and photography included in this brochure were as accurate as possible at the time of publication. Subsequent refinements may be evident in the actual product. Prices and specifications are subject to change without notice. All fuel and liquid capacities are approximate and dimensions are nominal. Fleetwood has designed its motor home brands to provide a variety of potential uses for its customers. Each unit features the optimum storage, fluid, seating and sleeping capabilities. Though the customer enjoys this potential, he/she also has the responsibility to select the proper combinations of loads without exceeding the chassis weight capacities.