

America's number-one selling diesel motor home.* An entirely new level of adventure.

With the Discovery® diesel motor home, you will find the journey just as rewarding as the destination.

This luxurious, top-of-the-line motor home greets the road with a fiberglass front-end cap, smart styling and a convenient forward position bus-style door. It's a look that meets with sophisticated approval on the outside and great anticipation of the feel and power within.

Experience quiet performance due to the Freightliner® chassis with full air-ride suspension, Jacobs® exhaust brakes, and a formidable Cummins® ISB 300-HP diesel engine in the rear. Add to this commanding road presence, an easy-to-read, automotive-style instrument panel and push button, six-speed automatic Allison World Transmission® for near effortless

maneuvering. And to guide you on your adventures—an optional navigation system is available.

The alder crown molding and cabinets with cherry wood finish make for a sensational looking interior. Then fulfill your lifestyle needs with spacious slide-out options in the bedroom, living room, dinette and galley. As there's plenty of overhead storage room above, you'll find lots below with ample basement storage—perfect for bringing along your gear. And together with Discovery's towing capacity** for ATVs or personal watercraft, you're assured to have everything you need for an extended stay. A journey made all the more possible with Discovery's 80-gallon fresh water tank.

With Discovery, go where you want, when you want. And set your dreams beyond the horizon.



* According to Statistical Surveys Jan. '99 – Dec. '99.

** Check your owner manual(s) for towing safety, rules and guidelines.

Freightliner® is a registered trademark of Freightliner Custom Chassis • Jacobs® is a registered trademark of Jacobs Vehicle Systems.
Cummins® is a registered trademark of Cummins • Allison World Transmission® is a registered trademark of Allison.

Features for 2001 Discovery

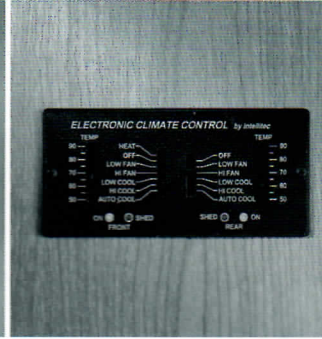
Our engineering may set us apart from the rest, but the things you'll notice most when you and your family take a trip, are the top-of-the-line features. Here are but a few of the items that make life on the road with Discovery memorable.



For on-the-road convenience, you'll appreciate the optional, residential-style washer/dryer.



Make finding your way around the country easier with the satellite-connected VDO Dayton Model MS 5000 GPS navigation system complete with software.

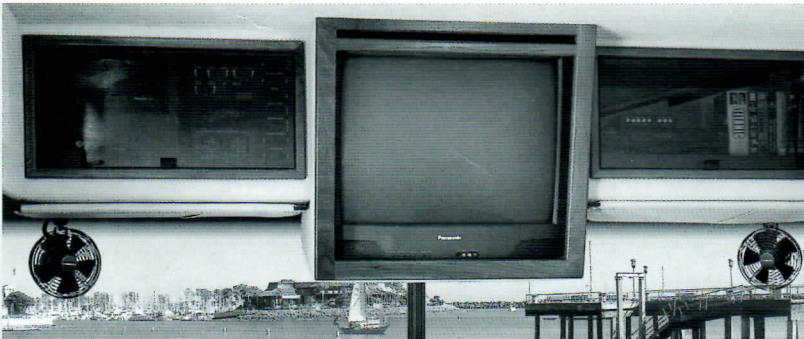


An electronic climate control system with dual A/C controls enables a separate climate in the front and rear of the coach.



Get "live" sound with the optional DHS Home Theater Sound System.

Over the cab, along with a 27" Panasonic® TV, you'll find the climate controls, monitor panel containing tank and battery levels, a VCR and optional CD changer.

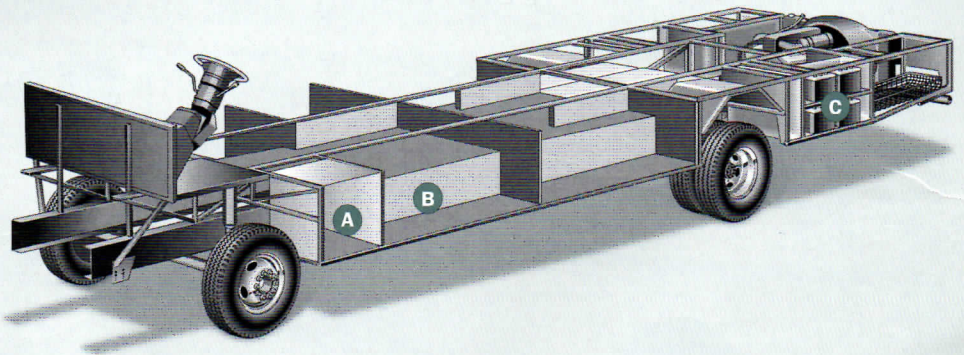


Discovery's basement space includes lots of storage for your gear.



The Diesel Power Platform II Makes the Difference

Discovery's quality begins long before the features come on board. We begin by building on our exclusive diesel Power Platform II, a unique truss design welded together using tubular steel that's durable, strong, and dependable. The result is a quiet and nearly flawless ride, increased floor strength, and substantially more storage space below. An all-steel foundation further reduces stress loads on the sidewalls and minimizes chassis flex on uneven roads.



A All exterior compartments are reinforced with substantial steel outriggers for increased durability and years of cargo carrying.

B Full basement construction maximizes space beneath the floor, encloses the heated water and holding tank compartments, and provides easy-to-reach storage.

C Easy access compartments let you get to Discovery's batteries and dual-battery charge control.

Drawing is for illustrative purpose only to highlight aspects of motor home construction. Actual motor home design depends on model and is subject to change.

2001 Discovery Standard Features

Appliances

- Front 27" Panasonic® Stereo TV in Overhead
- Rear 13" Panasonic® TV
- Hi-Fi VCR
- Smoke Detector/Alarm
- LPG Detector/Alarm
- CO Detector/Alarm
- 20M BTU/25M (Dual) Furnace
- 10-Gallon, Quick-Recovery Water Heater with D.S.I. (Gas/Electric)
- 22" 3-Burner, High-Output Cooktop
- Light/Power Range Hood
- Monitor Panel in Front Overhead
- Folding Corian® Range Cover
- Dual Roof A/C High Efficiency w/Solar Panel on Front A/C
- Water Heater Bypass
- Porcelain Toilet with Water Saver
- Toilet Tank San-T-Flush™ System
- Sharp® Convection Microwave
- 12-cu. ft. Side-by-Side Dometic® Refrigerator
- Single-Lever Galley Faucet
- Water Filter with Faucet
- Demand Water Pump with Filter
- TV Antenna
- Fan-Tastic® Power Roof Vent-Galley and Bath
- Fire Extinguisher
- Telephone Jack in Dash and Bedroom
- Rear Speakers in Bedroom

Body Structure

- Vacubond Upper/Lower Floor
- Vacubond Walls with Smooth High Gloss Exterior Fiberglass
- Radius Roof with Ducted A/C
- Rubber Roof
- Steel Floor/Wall/Ceiling Framing

Electrical

- Doorside Patio Receptacle
- 120V/12V AC/DC Converter with 1000-Watt Inverter
- Central Electrical Panel
- 120V/12V Wire Raceways
- 3-Way Water Pump Switch
- 6.5kW Generator (LPG)
- 30-amp Service
- Wall Switches
- ECC Climate Control
- Dual 6V/Deep-Cycle 218-amp House Batteries

Exterior

- Fiberglass Front/Rear Cap
- Fiberglass Front Quarter Panels
- Fiberglass Rear Wheel Well Trim
- Aerodynamic Styling
- Entry Door with Deadbolt Latch
- Slider Windows

Exterior (cont.)

- Torque Windows in Bedroom
- Discovery Logo Badging
- Utility Compartment with Exterior Shower
- 4-Point Manual Hydraulic Levelers
- Roof Ladder
- Exterior Entry Assist Handle
- Remote Heated Rear View Mirrors
- 20' Sewer Hose
- Park Cable Receptacle
- Awning Rail/Drip Molding (Both Sides)
- Power Entry Step
- Dual Battery Charge Control
- Porch Light
- 3 Colorway Graphics to Match Decor

Exterior Automotive

- Large, Curved Aerodynamic Bonded in Windshield
- Undercoating
- Stainless Steel Wheel Simulators
- Valve Extenders
- Underhood Utility Light
- Steel Surface on Bulkhead
- Trailer Hitch with 7-Point Electrical Hook-Up
- Large Single Headlamps with Turn Signal
- Rear Vision Camera
- Single Motor Windshield Wipers with Wet Arm
- Mud Flaps
- Fog Lamps
- Freightliner® Chassis 300HP

Exterior Storage

- Insulated Luggage Doors
- Single-Paddle/Metal Latches
- Continuous One-Piece Bulb Seal
- Hidden, Stainless Steel Latch Rods
- Hidden Lift Strut Supports
- Lighted Compartments
- Rotomolded Compartments
- Steel Seal Frames

Interior

- 3 Interior Decors
- Skylight in Tub/Shower
- Glass Shower Door with Bright Brass Frame
- Alder with Cherry Finish Wood Grain
- Printed Plush Wall-to-Wall Nylon Carpet w/Carpet Pad
- Wood Drawers
- Roller Guide Drawer Slides with Transit Ship Locks
- Cedar Lining in Wardrobe (36T and 37V only)
- Radius Corner Cabinetry
- Brass-Finished Cabinet Hardware
- Pleated Day/Night Shades
- Bedspread with Decor Pillows
- Restonic® Pillow Top Innerspring Mattress

Interior (cont.)

- Hardwood Cabinet Doors & Drawers
- Corian® Countertops in Galley & Lavvy
- Crown Molding
- Laminate Floor Tile in Galley & Bath
- Headboard
- Beveled Mirrors
- Slide-Out Dinette Bins with Locks
- Wainscot Paneling in Bedroom
- Hardwood Bath Door/Trims
- Wood Trim Table Tops (Dinette & Nightstands)
- Trash Basket in Galley
- Molded Fiberglass Tub/Shower with One-Piece Enclosure
- Bright Brass Bath Accessories
- Residential Seat Styling
- Entry Rail
- Hardwood Raised-Panel Cabinet Doors
- Adjustable Cabinet Shelves (Selected Cabinets)
- Sink Cutting Board
- Solid Divider Doors
- Large, Double Porcelain Sink in Galley
- Porcelain Bowl in Lavvy
- J-Lounge Sofa (37G only)

Interior Automotive

- Intermittent Wiper Control
- Multi-Function Sun Visors
- Cruise Control
- Radio with Cassette AM/FM/MX—Electronic Tuning
- Auxiliary Start Circuit
- Battery Shut-Off Switch
- Auto A/C Heater Combo
- Radio Switch—Main/Auxiliary Power
- Soft-Surface Automotive Dash
- Driver/Passenger Captain's Chairs with Reclining Back/Slide Controls
- Dash Fans
- Tilt Steering Wheel
- 3-Point Seat Belts on Driver/Passenger Seats

Interior Lighting

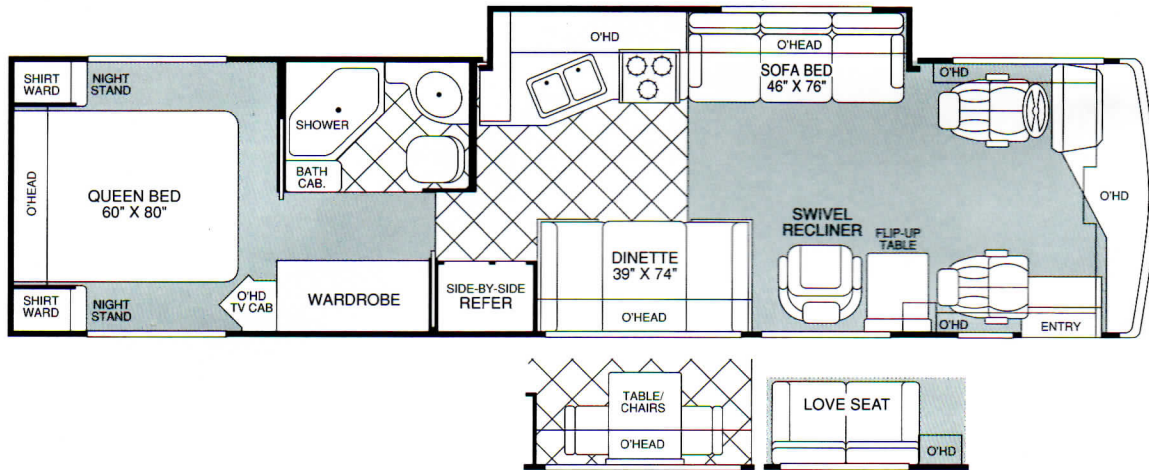
- Wardrobe Lighting (Except Slide-Out Wardrobe)
- Fluorescent Lighting
- Decor Lighting
- Incandescent Lighting
- Wall Sconces
- Make-Up Lights in Bath
- Bedroom Lighting

Platform Construction

- Basement Floor Configuration
- Heated Water & Holding Tank Compartments
- Polyethylene Luggage Compartment Boxes
- Steel Truss System

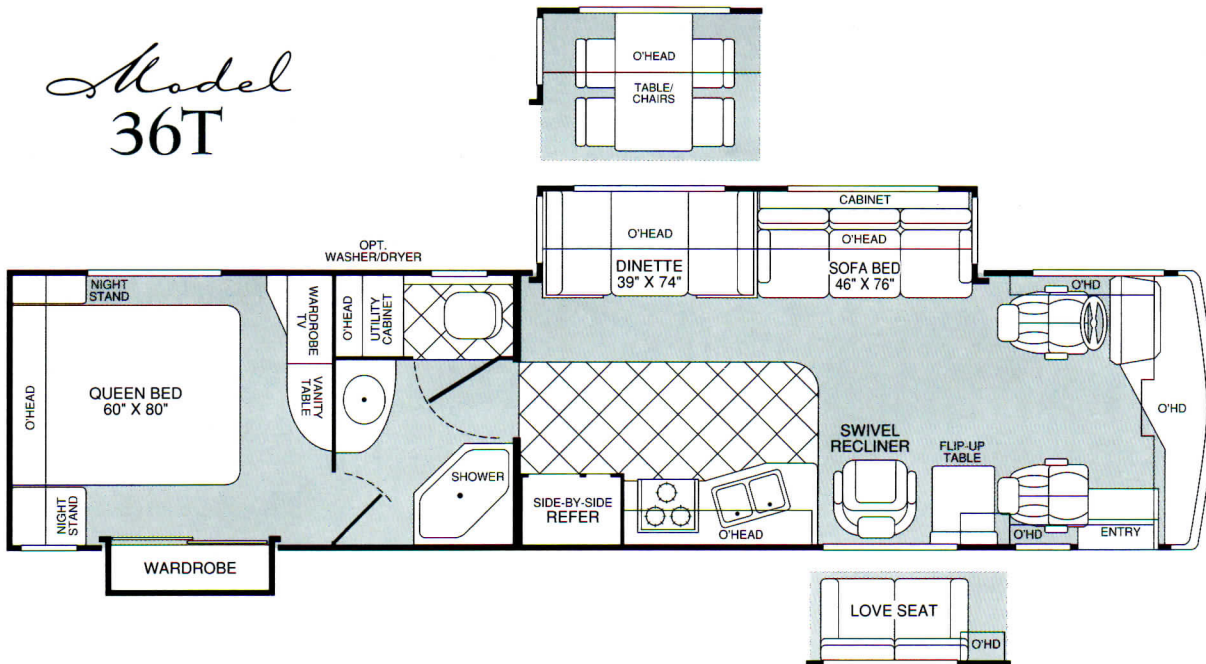
2001 Discovery Floor Plans

Model 34Q



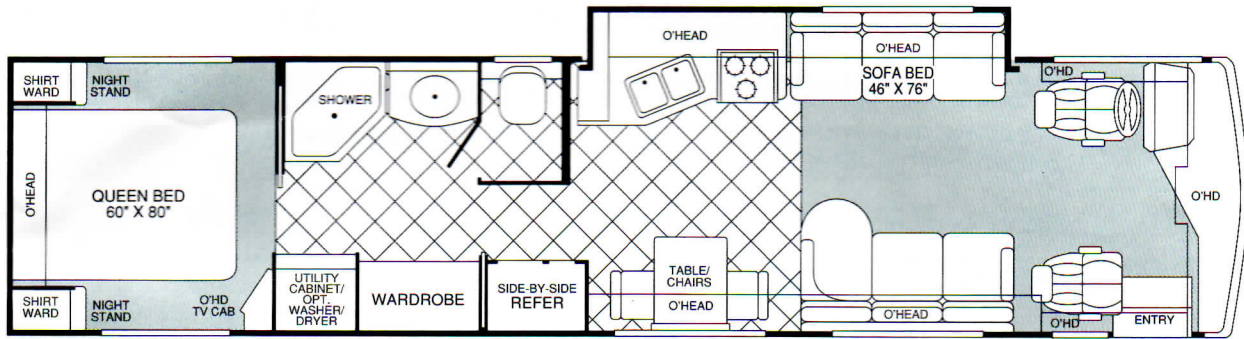
- Island Queen Bed
- Dual Shirt Wards and Nightstands
- Swivel Recliner with Flip-up Table or Optional Love Seat
- Fully Enclosed Bathroom
- Galley/Living Room Slide-Out with Sofa Bed
- Dinette or Optional Table with Chairs

Model 36T



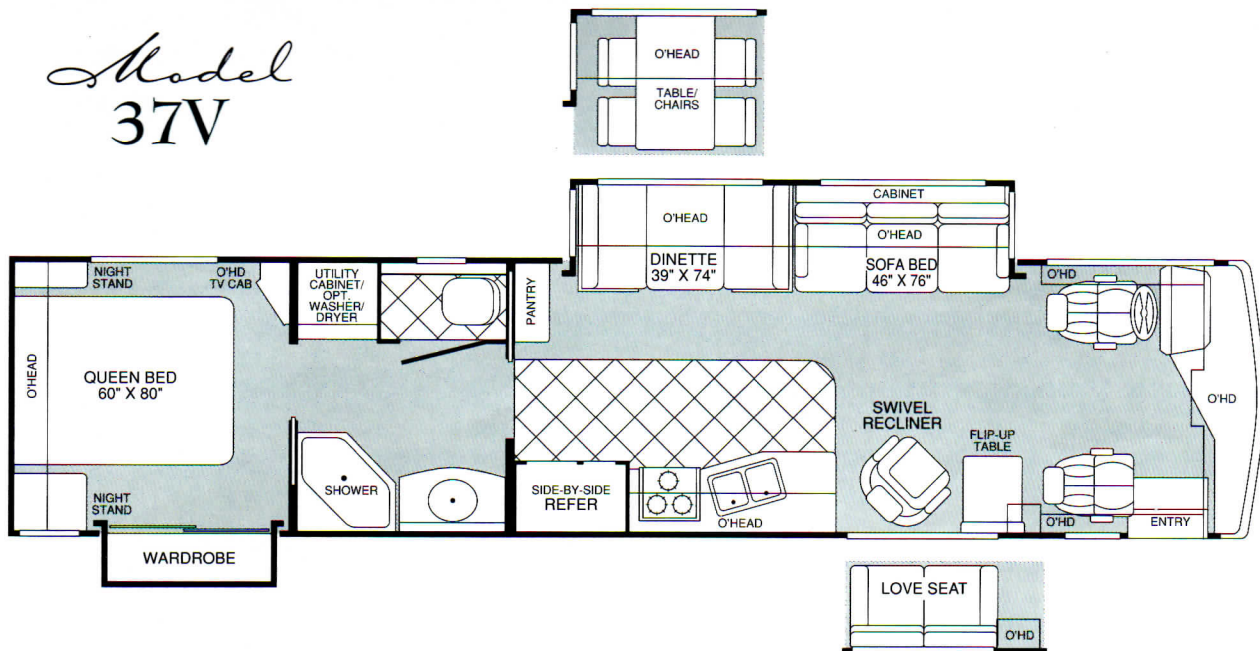
- Island Queen Bed
- Wardrobe Slide-Out
- Vanity Table
- Swivel Recliner with Flip-up Table or Optional Love Seat
- Optional Washer/Dryer
- Private Toilet
- Living Room Slide-Out with Sofa Bed
- Dinette or Optional Table with Chairs

Model 37G



- Island Queen Bed
- Dual Shirt Wards and Nightstands
- Table with Chairs
- Optional Washer and Dryer
- Private Toilet
- Galley/Living Room Slide-Out with Sofa Bed
- J-Lounge Sofa

Model 37V



- Island Queen Bed
- Wardrobe Slide-Out
- Private Toilet
- Swivel Recliner with Flip-up Table or Optional Love Seat
- Optional Washer and Dryer
- Living Room Slide-Out with Sofa Bed
- Dinette or Optional Table with Chairs

Realize a new sense of adventure by joining a Discovery Club

Traveling to new destinations and making new friends are some of the adventures awaiting you in a Discovery RV. Especially when you join a Discovery Club where you'll meet others with a similar passion for the RV lifestyle. Contact "Discovery Owners Association" for membership information.

Discovery Owners Association: 1-888-594-6818



2001 Discovery Options

Appliances	34Q	36T	37G	37V
Range 3-Burner Drop-In	OPT	OPT	OPT	OPT
Washer/Dryer	N/A	OPT	OPT	OPT
Central Vacuum System	OPT	OPT	OPT	OPT
DSS Manual Lift/Satellite Dish	OPT	OPT	OPT	OPT
Electrical	34Q	36T	37G	37V
7.5kW "Quiet" Onan® Diesel Generator	OPT	OPT	OPT	OPT
CSA Package	OPT	OPT	OPT	OPT
Exterior	34Q	36T	37G	37V
Awning—USA	OPT	OPT	OPT	OPT
Front Mask	OPT	OPT	OPT	OPT
Aluminum Rim	OPT	OPT	OPT	OPT
Spotlight with Remote Control	OPT	OPT	OPT	OPT
Roof Mount Chrome Air Horn	OPT	OPT	OPT	OPT
Interior Automotive	34Q	36T	37G	37V
CB Radio Ready	OPT	OPT	OPT	OPT
Stereo AM/FM with CD Player	OPT	OPT	OPT	OPT
Power/Seat—Driver	OPT	OPT	OPT	OPT
Leather/Heated/Power Driver and Passenger Seats	OPT	OPT	OPT	OPT
GPS Navigation System	OPT	OPT	OPT	OPT
Bedroom Radio	OPT	OPT	OPT	OPT
Interior	34Q	36T	37G	37V
Leather J-Lounge Sofa	N/A	N/A	OPT	N/A
Leather Sofa Bed	OPT	OPT	OPT	OPT
Leather Swivel Recliner	OPT	OPT	N/A	OPT
Free-Standing Dinette Table with Extension & Chairs	OPT	N/A	STD	N/A
Free-Standing Dinette with Chairs	N/A	OPT	N/A	OPT
Coffee Maker	OPT	OPT	OPT	OPT
Multiple CD Changer	OPT	OPT	OPT	OPT
DVD Player	OPT	OPT	OPT	OPT
Home Theater Sound System	OPT	OPT	OPT	OPT
Walnut Wood Grain	OPT	OPT	OPT	OPT
Love Seat	OPT	OPT	N/A	OPT
Slide-Out	34Q	36T	37G	37V
Galley—Galley/Sofa	STD	N/A	STD	N/A
Living Room—Dinette/Sofa	N/A	STD	N/A	STD
Bedroom Wardrobe	N/A	STD	N/A	STD

Onan® is a registered trademark of Cummins.

What happens when you've been setting the standards of RV quality for over 50 years?

You set them even higher. Our customers expect us to. As a matter of fact, first-time RV buyers, who bought other manufacturers' RVs, tell us they wish they'd spent a little bit more for better quality. That's why experienced buyers are more likely to buy a Fleetwood RV.* That's also why Fleetwood RV invests in people, systems and manufacturing quality that are second to none. This may make us a bit more expensive than some brands, but satisfied Fleetwood RV owners know we're worth it.

People... We hire engineers, designers and drafters from leading automotive design schools. Our front-line associates are well-trained, quality-minded men and women who take pride in their work. No other manufacturer has a larger, more professional team behind their products.



Systems... Our product development team uses state-of-the-art, computer-assisted-design (CAD)

technology to build in fit and finish right from the drawing board. Each product is meticulously documented with over 3,500 pages of engineering drawings. A computerized bill of materials details over 20,000 pieces that go into your motor home. And, a vehicle specific *Electronic Parts Catalog* shows 600-800 common parts... so, if you need a new part, your authorized Fleetwood RV service dealership knows exactly what you need. Some manufacturers may not invest the extra time and money to accurately document their products, which could cost you plenty in headaches and hassles down the road.

*Angus Reid RV Market Segmentation Study, 1998

2001 Discovery Specifications

Freightliner® Chassis	34Q	36T	37G	37V
Engine LD	5.9L	5.9L	5.9L	5.9L
Wheelbase	208"	228"	242"	242"
GVWR lbs/kgs (1)	26,500/12,021	26,500/12,021	26,500/12,021	26,500/12,021
Front GAWR lbs/kgs (2)	9,500/4,310	9,500/4,310	9,500/4,310	9,500/4,310
Rear GAWR lbs/kgs (2)	17,000/7,712	17,000/7,712	17,000/7,712	17,000/7,712
Base Weight lbs/kgs (3)	19,006/8,619	19,530/8,857	19,647/8,910	19,625/8,900
GCWR lbs/kgs (4)	31,500/14,289	31,500/14,289	31,500/14,289	31,500/14,289
Hitch Rating/Tongue Weight lbs	5,000/500	5,000/500	5,000/500	5,000/500
Hitch Rating/Tongue Weight kgs	2,268/227	2,268/227	2,268/227	2,268/227
Fuel Capacity gal/lbs (7.1 lbs/gal)	90/630	90/630	90/630	90/630

Dimensions	34Q	36T	37G	37V
Length (5)	34' 9"	36' 9"	37' 9"	37' 9"
Height (with A/C)	12' 1"	12' 1"	12' 1"	12' 1"
Width (maximum) (6)	102"	102"	102"	102"
Interior Height (maximum)	79"	79"	79"	79"
Interior Width (maximum)	96"	96"	96"	96"

Liquid Capacities (Gallons/Liters)	34Q	36T	37G	37V
Fresh Water Holding Tank (8.3 lbs/gal)	80/302	80/302	80/302	80/302
Grey Water Holding Tank (8.3 lbs/gal)	50/189	50/189	50/189	50/189
Black Water Holding Tank (8.3 lbs/gal)	50/189	50/189	50/189	50/189
Appliance LPG Tank (4.5 lbs/gal) (WC) (7)	24/91	24/91	24/91	24/91
Generator LPG Tank (4.5 lbs/gal) (WC) (7)	38/144	38/144	38/144	38/144
Water Heater Tank (8.3 lbs/gal)	10/38	10/38	10/38	10/38

Metric Conversions:	Feet to meters: ft x .304 = meters	Lbs to kgs: lbs x .454 = kgs	Gallons to liters: gal x 3.78 = ltrs
---------------------	------------------------------------	------------------------------	--------------------------------------

1. **GVWR (Gross Vehicle Weight Rating):** Means the maximum permissible loaded weight of the motor home. The GVWR is equal to or greater than the sum of the unloaded vehicle weight plus the net carrying capacity.
2. **GAWR (Gross Axle Weight Rating):** Means the maximum permissible loaded weight a specific axle is designed to carry.
3. **BW (Base Weight):** Means the weight of the motor home without fuel, options, water, cargo or passengers.
4. **GCWR (Gross Combined Weight Rating):** Means the value specified by the motor home manufacturer as the maximum allowable loaded weight of this motor home with its towed vehicle. Towing and braking capacities may differ. Refer to Fleetwood and chassis manufacturer manuals for complete information.
5. Length taken from front bumper to rear bumper.
6. Excludes safety equipment and awnings.
7. Tank Manufacturer's listed water capacity (WC). Actual LPG capacity is 80% of water listing as required by the safety code.

IMPORTANT – PLEASE READ: Product information and photography included in this brochure were as accurate as possible at the time of publication. For the most current product information and changes, please visit our website at www.fleetwood.com or contact your local Fleetwood dealer. Subsequent refinements may be evident in the actual product. Prices and specifications are subject to change without notice. All weights, fuel, liquid capacities and dimensions are approximate. Fleetwood has designed its recreational vehicles to provide a variety of uses for its customers. Each vehicle features optimal seating, sleeping, storage and fluid capacities. The user is responsible for selecting the proper combination of loads to ensure that the recreational vehicle's capacities are not exceeded.

Restonic® is a registered trademark of Restonic • Flexsteel® is a registered trademark of Flexsteel • TuffPEX™ is a trademark of Uponor.

Manufacturing... We only do what we know we're best at — building a quality-finished motor home. When it comes to the appliances, doors, windows, and furniture, we partner with other recognized leaders to do what they know best... top names like Sharp®, Panasonic®, Dometic®, Restonic® and Flexsteel®. Some manufacturers will tell you partnering like this makes us final assemblers. We call it working smarter to bring you more value.

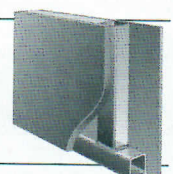


We build our cabinets and secure them to the floor before the walls go up to add strength, and help eliminate noises.

Quality... The quality outside reflects the quality inside — places where you can't see it, but where it really counts. For example, we use vacubonded sidewall construction that's required for the special needs of a motor home. Automotive bonded windshield on most models. Our new TuffPEX™ plumbing system is able to withstand temperatures as low as -40° F. And now offered on our mid- to high-end Class A motor homes, a new, revolutionary exterior sidewall material which contains no wood products to guard against swelling, rotting and delamination. Before any unit rolls off the line at each of our plants, it goes through a documented checklist containing hundreds of items specific to that product. It won't leave the

plant until it has met our high standards. And, the list goes on.

For strength, noise reduction and insulation, composite sidewalls and floors are constructed of steel, plywood and polystyrene foam.



From the drawing board to the assembly line, we will continue to develop and manufacture quality products for our customers.

Fleetwood RV... Setting standards beyond your expectations.

Fleetwood's Far-Reaching Warranty and Service Program



Limited One-Year/ Three-Year Warranty

Leaving the Fleetwood dealership after you've purchased your RV doesn't mean leaving each dealer's commitment to your satisfaction behind.

OWNERCARE, Fleetwood's extensive warranty and service program, provides one/three year(s) of dedicated customer satisfaction. OWNERCARE stands out as one of the RV industry's most comprehensive programs and includes systems and applications, construction, no deductible and no service charge. See your nearest Fleetwood dealer for a full explanation of benefits and restrictions.

Fully Transferable

At Fleetwood RV, we're confident in our products and don't hesitate to stand behind them. Your newly purchased Fleetwood RV comes with one of the industry's most comprehensive warranties, fully transferable for the first 12 months.

Fleetwood RV and Motor Sports: A Winning Team



Three wide in the first turn. 200 miles per hour on the back straight. Passing for the lead through the short chute. Nothing beats the excitement of NASCAR racing. Every year thousands of NASCAR

fans and Fleetwood RV owners travel to races to support their favorite drivers, enjoy time with family and rekindle friendships.

RVs have become as much a part of motorsports as pit row and the checkered flag. That's why Fleetwood RV is a proud sponsor of 1999 Winston Cup Champion Dale Jarrett and the Robert Yates Racing Team.

As the number one RV manufacturer* in the country, our winning ways continue. Fleetwood RV is now the "Official Recreational Vehicle" at nine

*According to Statistical Surveys Jan. '99-Dec. '99

www.fleetwood.com

Visit our website to find a dealer near you, learn more about other Fleetwood products or purchase Fleetwood branded apparel. Or call 1-800-444-4905.

FOR CUSTOMER ASSISTANCE, call toll free 24 hours a day at 1-800-322-8216, visit our website, or you may write to Fleetwood Enterprises, Inc., P.O. Box 7638, Riverside, CA 92513-7638.

IMPORTANT-PLEASE READ: Product information and photography included in this brochure were as accurate as possible at the time of publication. For the most current product information and changes, please visit our website at www.fleetwood.com or contact your local Fleetwood dealer. Subsequent refinements may be evident in the actual product. Prices and specifications are subject to change without notice. All weights, fuel, liquid capacities and dimensions are approximate. Fleetwood has designed its recreational vehicles to provide a variety of uses for its customers. Each vehicle features optimal seating, sleeping, storage and fluid capacities. The user is responsible for selecting the proper combination of loads to ensure that the recreational vehicle's capacities are not exceeded.

National Coverage

Have a question about your new Fleetwood RV? We've got it covered. The nation's largest trained dealer network—ready, willing and able to provide you with the services you need to make every moment of owning your RV enjoyable. Over 1,100 Fleetwood dealers throughout the U.S. and Canada are available to you. With national coverage, peace of mind and complete satisfaction are just a phone call away.



An Extra Thank You

Ask your dealer about your Thousand Trails complimentary 30-day membership certificate. It's your chance to get going in your new RV and enjoy some scenic camping, plus our way of thanking you again for your purchase of a Fleetwood RV. For more information on your complimentary membership certificate, please call 1-800-205-0606. Happy (Thousand) Trails!



International Speedway Corporation racetracks.** And for Fleetwood owners, emergency service crews are available at select tracks to ensure a trouble-free weekend. While you're enjoying the race, be sure to look for the Fleetwood RV Prize Patrol and go home with some exciting giveaways.

So this weekend, pack up your friends and family and experience the thrill of cheering on Dale firsthand, in first-class style, with Fleetwood RV.

** Daytona International Speedway, Darlington Raceway, Talladega Superspeedway, California Speedway, Richmond International Speedway, Michigan Speedway, Watkins Glen International Speedway, Phoenix International Raceway, Homestead-Miami Speedway.



FLEETWOOD RV

America's Favorite Recreational Vehicles

Fleetwood Enterprises, Inc., RV Marketing, P.O. Box 7638, Riverside, CA 92513-7638

Your local Fleetwood RV dealer is:

Blaine Jensen R.V.
780 North 900 West
Kaysville, UT 84037
(801) 544-4298

