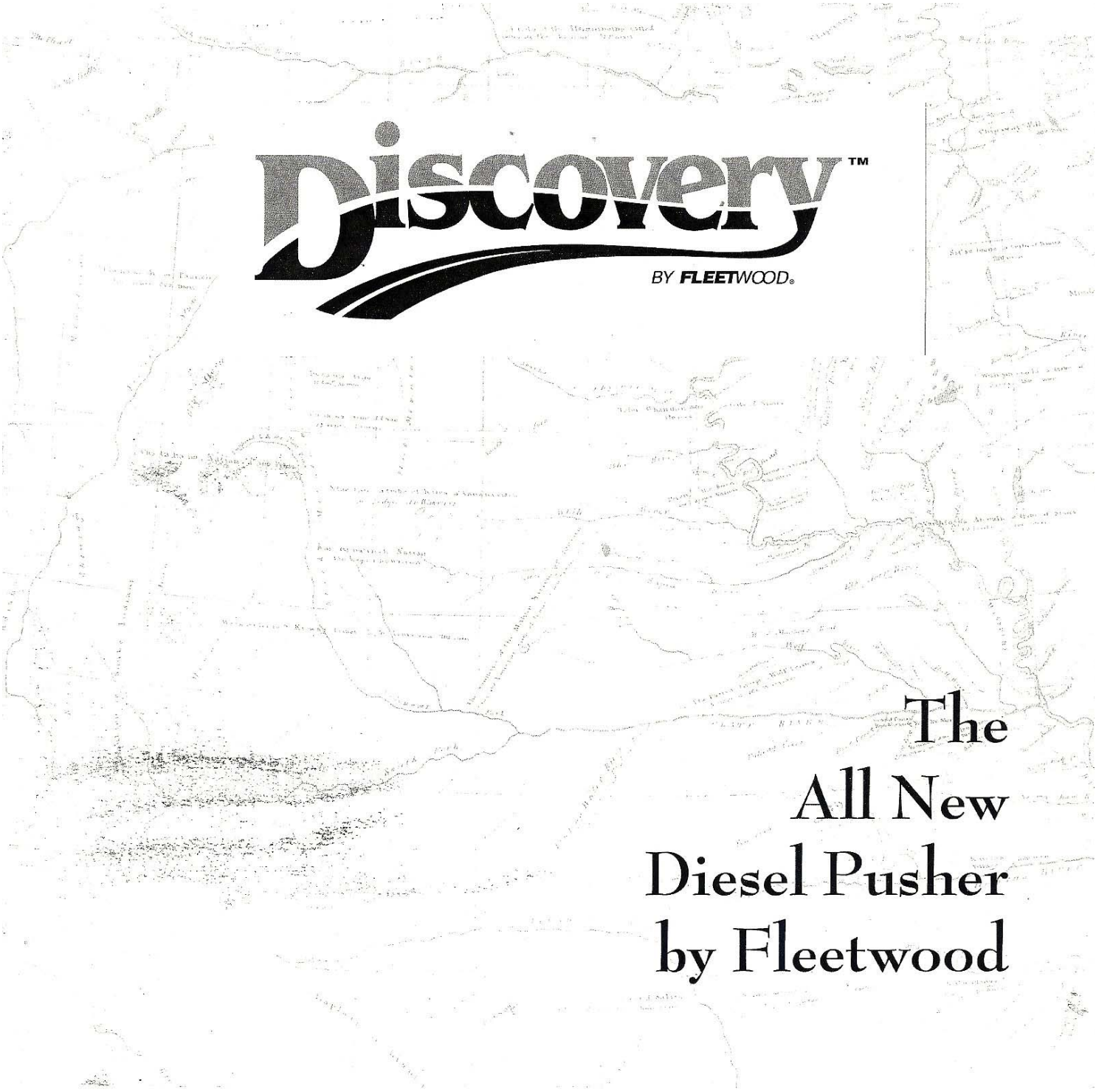
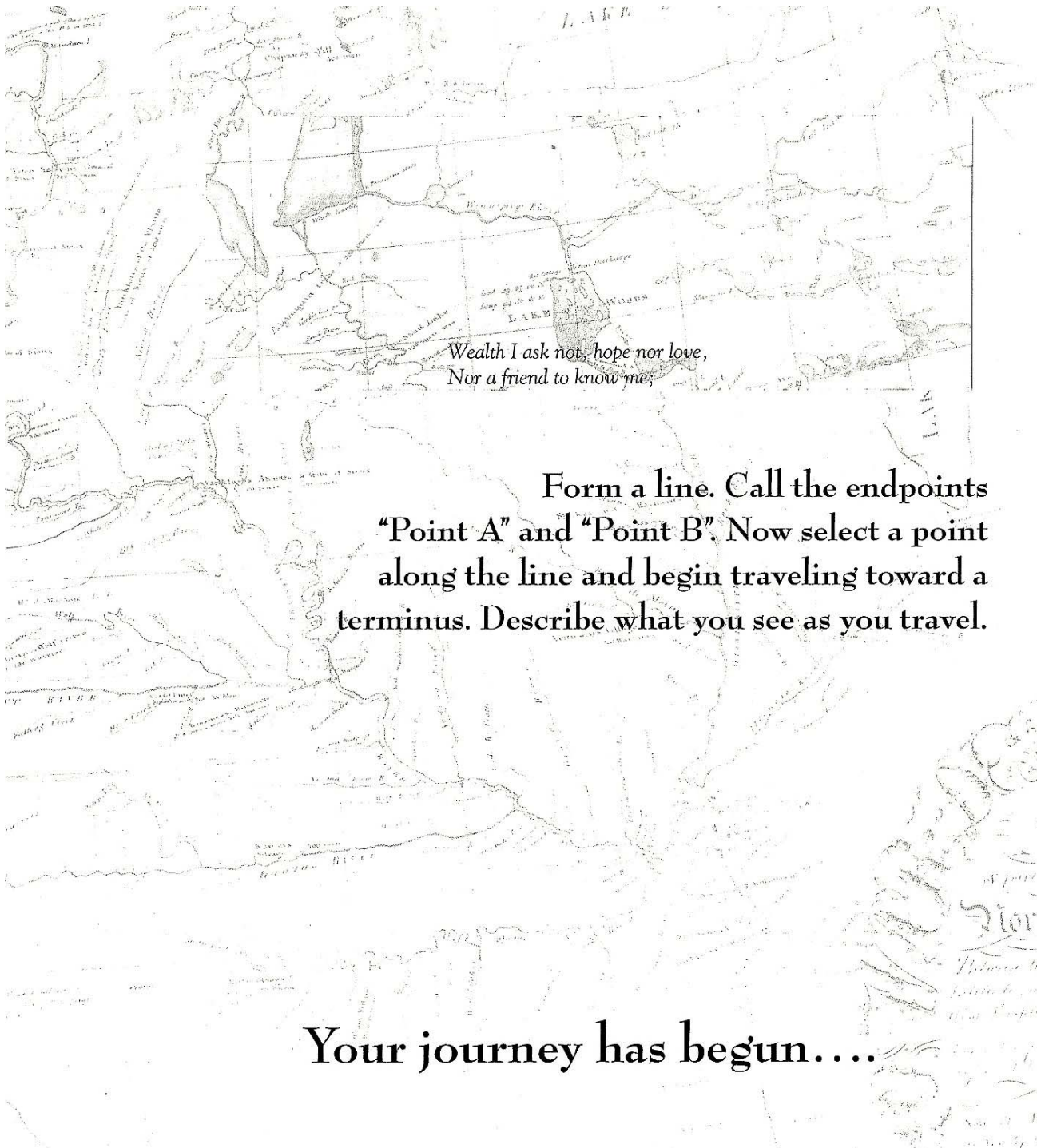




Discovery™
BY FLEETWOOD®



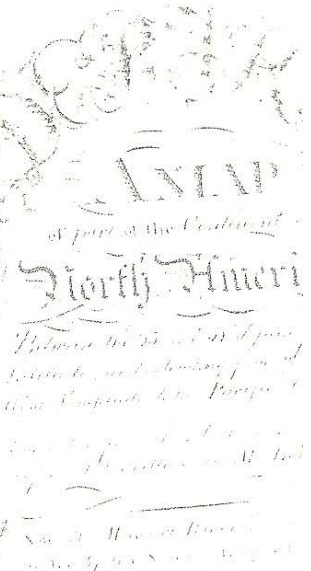
The
All New
Diesel Pusher
by Fleetwood



Wealth I ask not, hope nor love,
Nor a friend to know me;

Form a line. Call the endpoints
"Point A" and "Point B". Now select a point
along the line and begin traveling toward a
terminus. Describe what you see as you travel.

Your journey has begun....



The 1997 Discovery motor home provides supreme handling and exceptionally quiet ride. A 275 hp Cummins® diesel engine with Jacobs® exhaust brake and GHTliner® chassis with air ride suspension give powerful, safe control over the road.





We offer you the best in transportation and living....

The pursuit of happiness is designed to be just that: a pursuit where we are not destined to reach a limit; the pursuit is everything and reaching an endpoint is not the purpose. It is as if we have set a goal which we are at liberty to redefine at will.

One is challenged to find new ways of obtaining satisfaction; a higher pleasure, a larger learning

ground, an endless horizon. It is then that we look outward; toward our friends, our family, our purpose and our meaning...we search and push on, waiting for (and sometimes inventing) a new means to get us there faster, better and with greater ease.



For my part, I travel not to go anywhere, but to go. I travel for travel's sake. The great affair is to move.

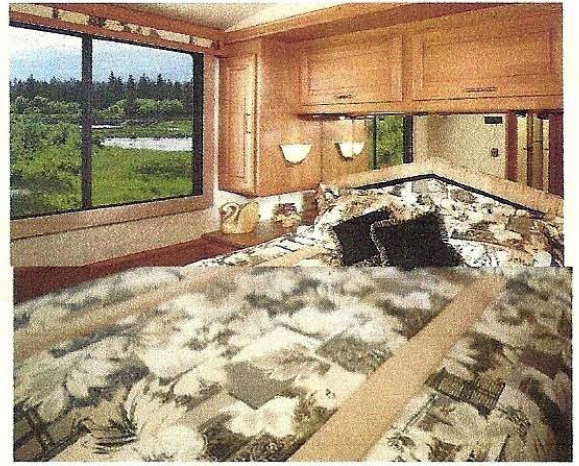
Robert Louis Stevenson



The Cashmere interior accents the 102" widebody Discovery 36A. Standard features include ducted air conditioning, dual glazed windows, oak plank flooring in the galley and 12 volt fluorescent lighting (pictured with optional leather sofa).

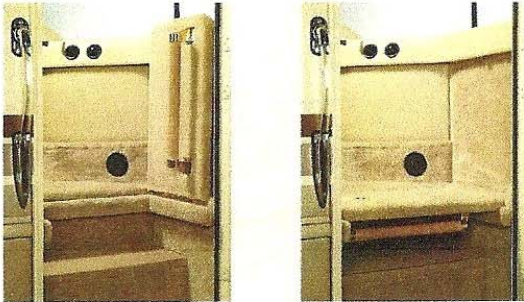


Comfort and luxury exemplified with 2" wood plantation blinds (living room only), Flexsteel® furniture and optional leather sofa, and a 20" television and VCR above the driver's station.



A 60" x 75" queen-size bed highlights the bedroom, and two shirt wardrobes plus a full-size ward provide plenty of closet space. If you require more sleeping area for guests, the dinette and sofa both convert into comfortable beds.

Now you can look back on the many times you had to travel in cramped style, limiting yourself to just the bare necessities – and rest comfortable in the fact that those days are long gone..



The step well cover is conveniently hinged and folds down to cover the entry steps to provide a flush, virtually seamless seal with the carpet and floor (front entry only).



We have entered, almost without noticing, an age of exploration and discovery unparalleled since the Renaissance.

Carl Sagan



The intelligent design of the Discovery driver's console keeps all instruments visible and controls within easy reach. The dash-mounted rear vision monitor and tile/telescoping steering column, combined with the pushbutton electronic shifter, make traveling simple and safe.



1997 Cashmere and Burgundy exterior



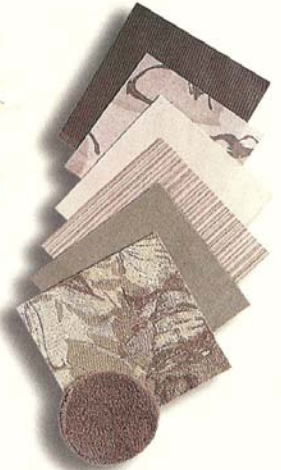
1997 Sage exterior



Cashmere interior fabric



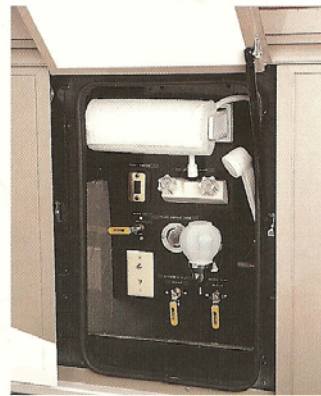
Burgundy interior fabric



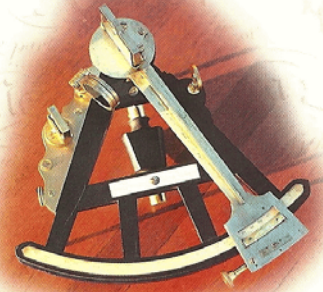
Sage interior fabric



The driver's console features a pushbutton electronic shifter, hydraulic leveling jacks and a hot/cold beverage holder that keeps coffee hot or cold drinks chilled with the flick of a switch (a second beverage holder is also standard on the passenger side).



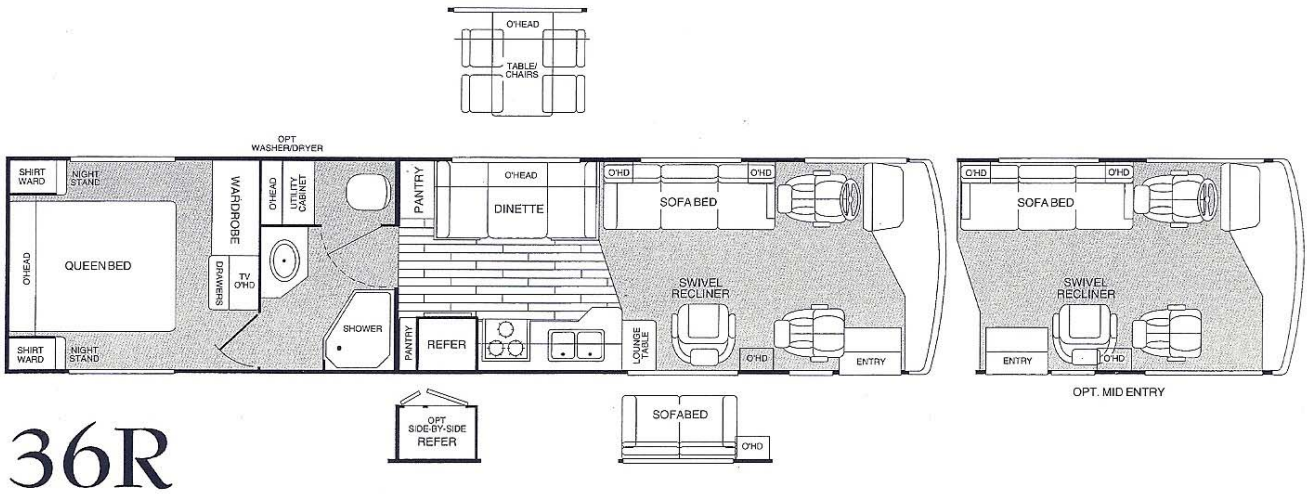
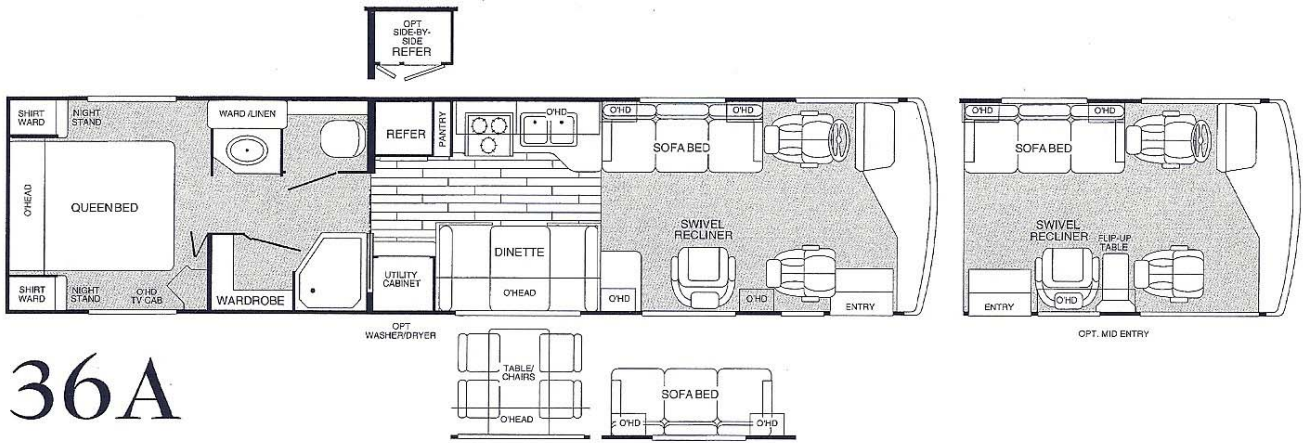
An exterior shower and hygiene station let you clean up before entering the Discovery.



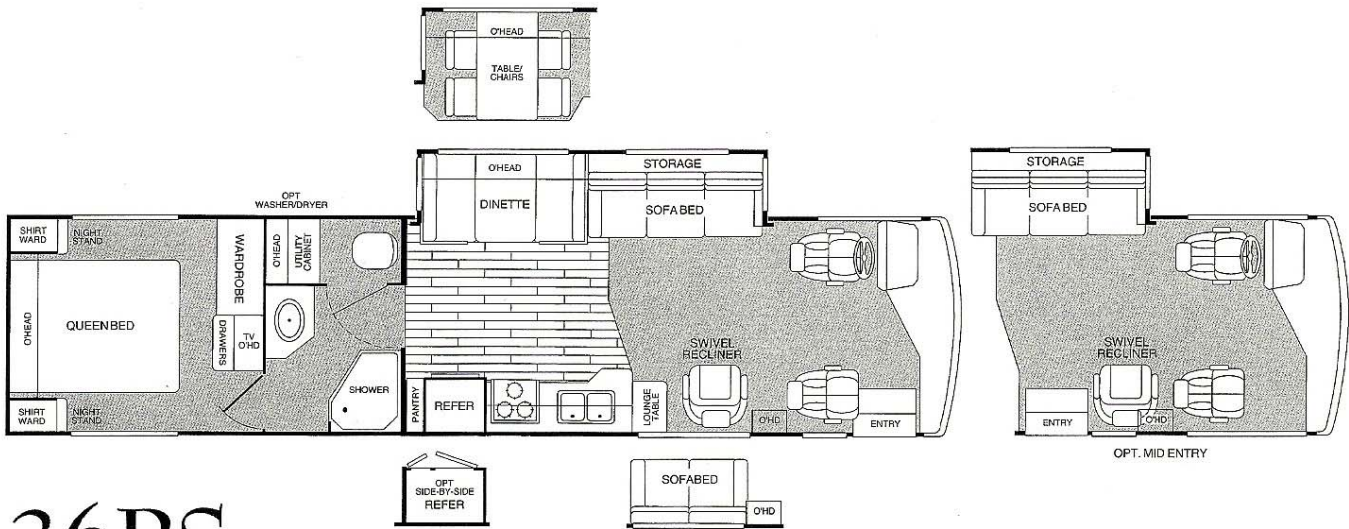
Traveling is almost like talking with men of other centuries.

René Descartes

F L O O R P L A N S



F L O O R P L A N S



36RS

Featuring Fleetwood's exclusive, patented E-Z Glide™ slide room system.

S P E C I F I C A T I O N S

	36A	36R	36RS
Engine	Cummins® 275HP 5.9L diesel engine	S	S
Dimensions	Overall Length	36'10"	36'10"
	Overall Height – (w/AC)	12' 5/8"	12' 5/8"
	Overall Width	102"	102"
	Interior Height	79"	79"
	Interior Width	96"	96"
Weights (pounds)	GVWR ¹	24,850	24,850
	GCWR ³	29,850	29,850
	Front Gross Axle Weight Rating	9,350	9,350
	Rear Gross Axle Weight Rating	15,500	15,500
Liquid Capacities² (gallons)	Fresh Water	80	80
	Black Water Holding	60	60
	Gray Water Holding	60	60
	Generator LPG Tank	40	40
	Appliance LPG Tank	25	25
	Fuel Tank	90	90
Sleeping Accommodations	Dinette (39" x 74")	S	S
	Queen Bed (60" x 75")	S	S
	Sofa Bed (46" x 76")	S	S
	Leather Sofa Bed (46" x 76")	0	0
	Leather Sofa Bed (46" x 52")	0	0

¹ GVWR (Gross Vehicle Weight Rating) means the maximum permissible weight of this motor home. The GVWR is equal to or greater than the sum of the Unloaded Vehicle Weight plus the Net Carrying Capacity.

² All capacities are approximate.

³ GCWR (Gross Combination Weight Rating) means the value specified by the motor home manufacturer as the maximum allowable loaded weight of this motor home with its towed trailer or towed vehicle.

F E A T U R E S

APPLIANCES AND ELECTRONICS	
Dual roof air conditioners	S
Energy management system	S
Electronic climate control	S
Sharp® convection microwave	S
Magic Chef® 3-burner, high-output cooktop	S
Panasonic® 20" stereo TV - living room	S
Panasonic® 13" AC/DC TV - bedroom	S
Panasonic® VCR with remote control	S
DSI hot water heater	S
Dual furnaces - 35M/20M BTU	S
Power bath vent	S
Fantastic® power roof vent	S
1000 watt inverter/converter	S
Patio receptacle	S
Dual 6V battery - 217 amp	S
6.5 KW Onan® generator (LP fuel)	S
Porcelain toilet	S
Washer/dryer	0
Dometic® refrigerator - side by side with ice maker	0
AUTOMOTIVE	
Freightliner® chassis	S
Air suspension	S
Air brakes	S
Exhaust brake	S
Air horns	S
275hp Cummins® diesel engine	S
Push-button electronic shifter	S
660 lb-ft peak torque at 1,600 rpm	S
Allison® 6-speed World® electronic transmission	S
Tilt / telescope steering column	S
Michelin® 22.5" tires	S
5,000 lb capacity trailer hitch	S
Hydraulic leveling jacks	S
Dash fans	S
Full fiberglass front & rear caps	S
Battery disconnect	S
Polished aluminum wheels	0

EXTERIOR FEATURES	
Wrap-around windshield	S
Forward entry door with screen	S
Power entry step	S
Halogen headlamps	S
High gloss fiberglass finish	S
Remote heated rearview mirrors	S
Exterior shower	S
Backup camera and monitor	S
Fog lights	S
Awning	0
Mid-entry door with screen	0

INTERIOR FEATURES	
Tri-view medicine cabinet	S
Rear-view monitor integrated into dash	S
Multi-position sun visors	S
Ducted roof A/C	S
Radio/cassette player	S
Step well cover	S
Hot and cold beverage keeper on driver and passenger side	S
2" wood blinds in the living room	S
Oak plank galley floor	S
Solid wood cabinet doors and drawer faces	S
Reclining Flexsteel® chair w/footrest	S
Fluorescent lighting	S
Porcelain sink	S
Water purifier	S
Corian® countertop with range cover	S
Corian® sink covers	S
Leather sofas	0
Free-standing dinette	0
6-way power driver's seat	0
Leather driver/passenger seating surface	0

SAFETY FEATURES	
LPG leak detector	S
CO detector	S
Smoke detector	S
Fire extinguisher	S

Product information and photography included in this brochure were as accurate as possible at the time of publication. Subsequent refinements may be evident in the actual product. Prices and specifications are subject to change without notice. All fuel and liquid capacities are approximate and dimensions are nominal.

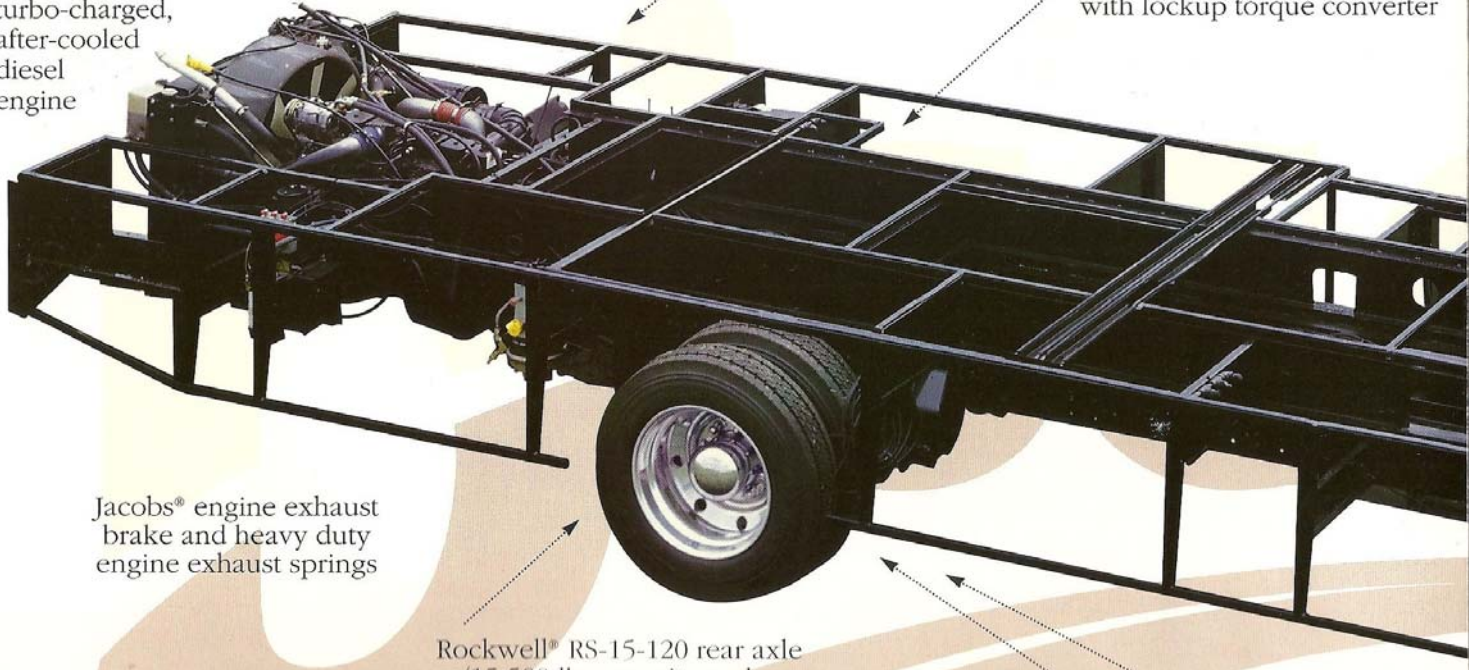
Fleetwood has designed its motor home brands to provide a variety of potential uses for its customers. Each unit features the optimum storage, fluid, seating and sleeping capabilities. While the customer enjoys this potential, he also has the responsibility to select the proper combinations of loads without exceeding the chassis weight capacities.

The Discovery motor home is built on the Freightliner® XC chassis

Cummins® 275HP
5.9 L rear mounted
turbo-charged,
after-cooled
diesel
engine

750 watt in-block
engine heater

Allison® MD3060 six speed
World automatic transmission
with lockup torque converter



Jacobs® engine exhaust
brake and heavy duty
engine exhaust springs

Rockwell® RS-15-120 rear axle
w/15,500 lb. capacity and a
track width of 69.3 in.

Full air brakes with
adjusters. 15 x 4 in.
15 x 6 in. rear dr

Neway® a
Bilstein® tune



The Discovery motor home features Fleetwood's patented Power Platform

The Power Platform isn't just the next step in basement motor home design; it's a dramatic leap forward. Rugged steel outriggers extend from the I-beams. These provide a firm foundation for all the exterior compartments and relieves the sidewalls from having to support all the weight. The Power Platform is incredibly strong, proving itself to be ten times stronger than conventional motor home construction in its ability to support a load.

E-Z Glide SYSTEM

The exclusive, patented E-Z Glide™ slide-out system was developed and tested to perform better than any other slide system in the industry. The swing arm construction is anchored to the chassis, the strongest part of the unit, eliminating the problems of typical systems like jamming, sidewall loading and tipping. And it is the fastest system available - fully extending in about 14 seconds. Fleetwood's E-Z Glide system also includes a three year warranty.

Fleetwood's exclusive patented E-Z Glide system (the skeleton of the industry's best slide room system)

TRW TA365, integral hydraulic power gear steering system

Douglas® tilt/telescoping steering column

TM

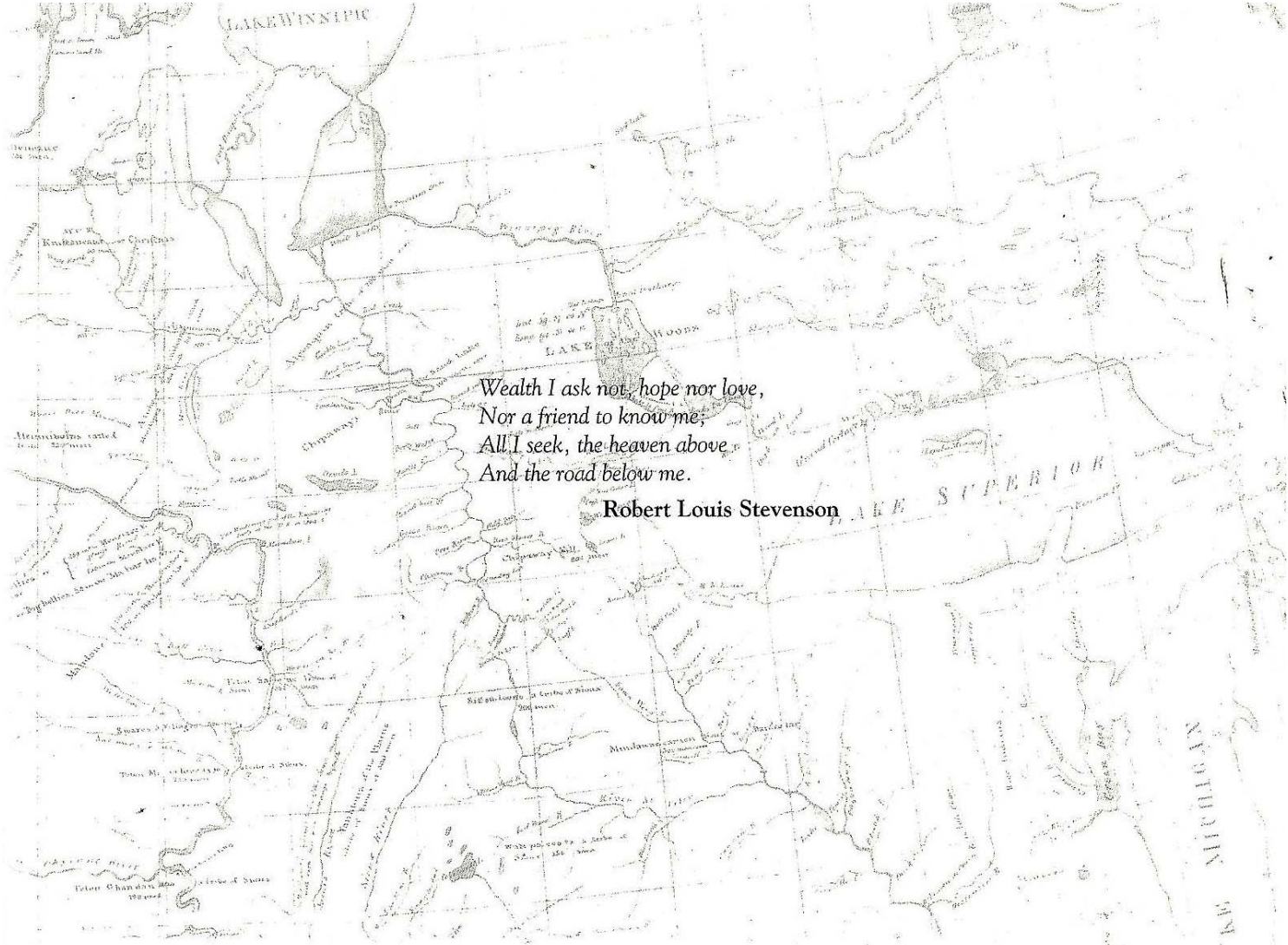


auto slack front and drum-style

suspension and shocks front and rear

Six Michelin 235/80R 22.5, XRV tires

E-Z Glide™ slide-out system is a registered trademark of Fleetwood Enterprises, Inc



Wealth I ask not, hope nor love,
Nor a friend to know me;
All I seek, the heaven above,
And the road below me.

Robert Louis Stevenson

Your local dealer is:

If your local dealer is not indicated
write to the address below or call
toll free 1-800-444-4905

Fleetwood Enterprises, Inc. • P.O. Box 92919 • Milwaukee, WI 53202-0919 **BY FLEETWOOD**
Quality Above All

© 1996 Fleetwood Enterprises, Inc. Litho in USA 1/97, Edition 2