



Slide room out and raise bed.



Remove hairpin clips from hinges.



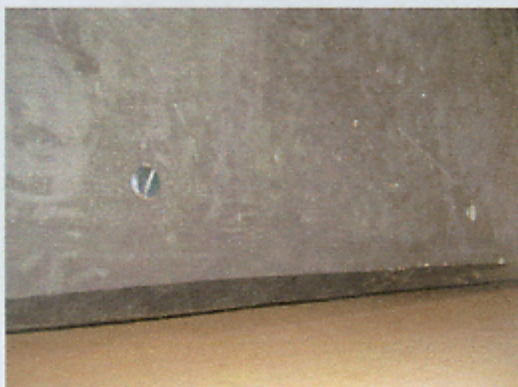
Remove L-shaped bed support.



Tilt carpeted floor board as you slide it out.



This exposes the 4 securing screws that hold the main access cover.



Large slotted screws secure the main and upper engine cover access covers. 4 screws in each section.



Remove chairs and table top from ward.



Remove air intake cover.



Tilt cover up from rear wall to slide out.



Upper section is secured by 4 screws which when removed accesses the radiator & fan.