



SERVICE INSTRUCTIONS FOR SEAL REPLACEMENT OF POWER GEAR HYDRAULIC LEVELING LEGS

POWER GEAR BASE LEG PART NUMBER SEAL REPAIR KIT PART NUMBERS:

500384, 500384H, 500482H - 6000 LB. 2001-PRESENT - 800132S
500082, 500082H, 500146, 500235H, 500272 - 9000 LB. 2003 & PRIOR - 800129S
500385TH - 12000 LB 2003 & PRIOR - 800137S
500070, 500070TH, 500145 - 16000 LB. 2003 & PRIOR - 800131S
500386T, 500620 - 24000 LB. 2003 & PRIOR - 800130S
500876, 500730, 500832, 500842, 500933 - 6000 LB. POWER LEVEL - 800133S
500759, 500833, 500843, 500932 - 9000 LB. POWER LEVEL - 800138S
500800 - 12000 LB. POWER LEVEL - 800199S

WARNING!

HYDRAULIC COMPONENTS CAN CAUSE SERIOUS INJURY OR DEATH IF PROPER SAFETY PRECAUTIONS ARE NOT FOLLOWED. ALL HYDRAULIC PRESSURE MUST BE RELEASED FROM THE SYSTEM, INCLUDING RAISING ALL JACKS AND REMOVING POWER FROM THE SYSTEM BEFORE REMOVAL OR DISASSEMBLY IS ATTEMPTED.

ALWAYS WEAR SAFETY EQUIPMENT. SAFETY GLASSES, GOGGLES AND/OR FACE SHIELDS CAN PREVENT SERIOUS INJURY AND SHOULD BE USED TO PREVENT EYE DAMAGE.

POWER GEAR WARRANTS THE SEALS AND COMPONENTS OF THESE KITS FOR 90 DAYS AGAINST DEFECTS IN MATERIALS AND WORKMANSHIP. NO GUARANTEE EXISTS ON THE ULTIMATE SUCCESS OR FAILURE OF THE JACK. THE SUCCESS OF THE RESEAL DEPENDS ON THE CARE TAKEN DURING INSPECTION, THE SKILL OF THE TECHNICIAN AND THE CLEANLINESS DURING THE RE-ASSEMBLY. ANY DEFECT ON THE SURFACE OF THE ROD WILL RESULT IN SEAL FAILURE OR REDUCE THE LIFE OF THE SEALS.

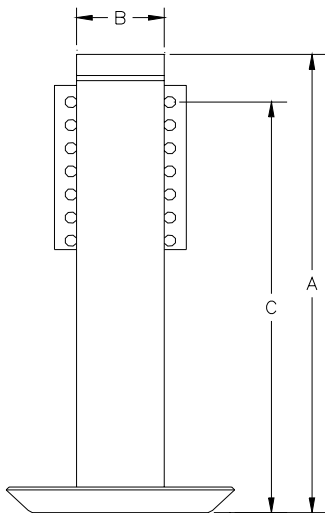
NOT ALL JACKS CAN BE DISASSEMBLED DUE TO VARIANCES IN ASSEMBLY TECHNIQUE, DISASSEMBLY TOOLS AVAILABLE OR DAMAGE DUE TO ENVIRONMENTAL CONDITIONS OR ABUSE. WHILE ONLY A VERY SMALL PERCENTAGE OF JACKS ARE IMPOSSIBLE TO DISASSEMBLE, JACKS SHOULD BE DISASSEMBLED BEFORE SEAL REPLACEMENT OR JACK REPLACEMENT COSTS ARE DETERMINED.

TABLE OF CONTENTS

TOOL REQUIREMENTS _____	PAGE 4
LEG IDENTIFICATION INFORMATION _____	PAGE 2
INTERNAL SPRING LEGS _____	PAGE 5
EXTERNAL SPRING LEGS _____	PAGE 13
POWER LEVEL LEGS _____	PAGE 18

LEG IDENTIFICATION INFORMATION

INTERNAL SPRING JACKS



A =22 5/16" B=3 5/8" - 12000 LB. LEG PART # - 500385TH
--

A =22 5/16" B=4" - 16000 LB. LEG PART # - 500145

A =22 3/8" B=4 1/2" - 24000 LB. LEG PART # - 500386T

A =22 3/8" B=4 1/2" - 24000 LB. LEG PART # - 500620 WIDER MOUNTING BRACKET WIDTH = 7 1/4"

A =18" B=2 5/8" - 6000 LB. LEG PART # - 500482H 12" STROKE
--

A =18" B=2 5/8" - 6000 LB. LEG PART # - 500600 OBSOLETE - USE 500482H
--

A =21 5/16" B=2 5/8" - 6000 LB. LEG PART # - 500384H 14" STROKE

A =21 5/16" B=2 5/8" - 6000 LB. LEG PART # - 500598 OBSOLETE - USE 500384H

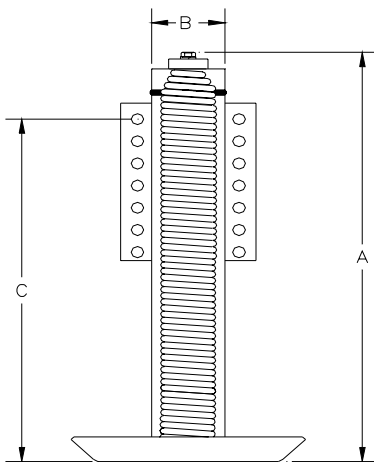
A =18" B=3 1/4" - 9000 LB. LEG PART # - 500498

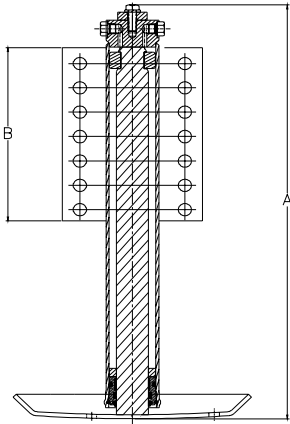
A =18 5/16" B=3 1/4" - 9000 LB. LEG PART # - 500235H 12" STROKE

A =20 3/4" B=3 1/4" - 9000 LB. LEG PART # - 500146 15" STROKE

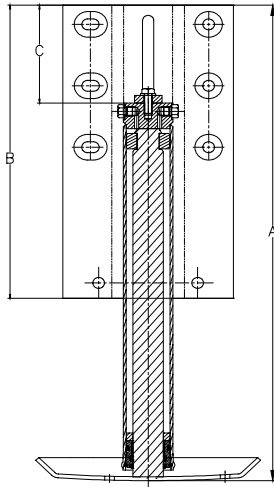
A =20 3/4" B=3 1/4" - 9000 LB. LEG PART # - 500272 FLAT SHOE - OBSOLETE - USE 500146

EXTERNAL SPRING JACKS

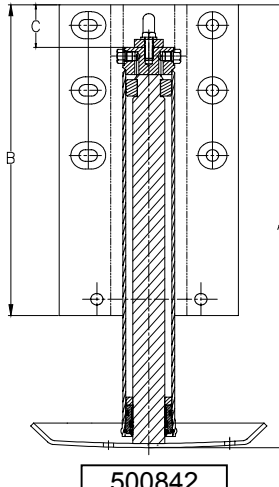




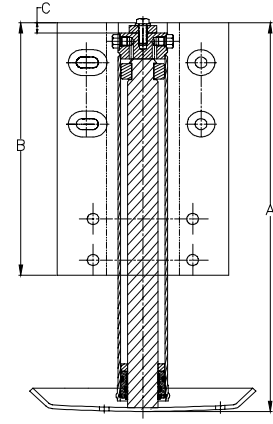
500730



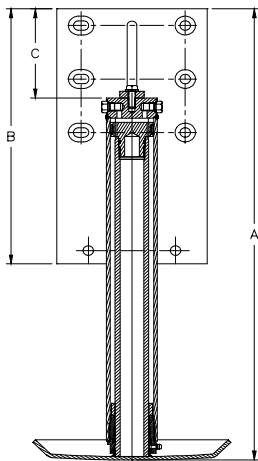
500832



500842

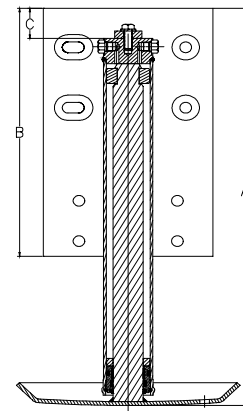


500876

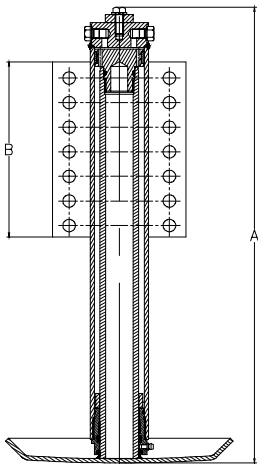


500932

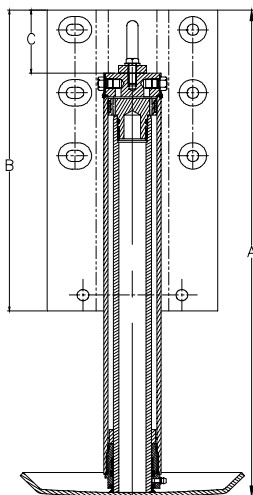
6000 LB. POWER LEVEL LEGS			
PART #	A	B	C
500730	19.146"	8.000"	
500832	23.22"	8.000"	
500842	20.400"	14.313"	2.500"
500876	18.94"	12.313"	.500"
500933	19.72"	12.313"	1.500"
9000 LB. POWER LEVEL LEGS			
PART #	A	B	C
500759	20.846"	8.000"	
500833	23.140"	14.313"	3.000"
500843	21.141"	14.313"	1.000"
500932	25.31"	14.313"	5.000"



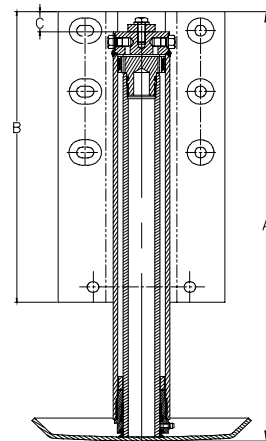
500933



500759



500833



500843

TOOL REQUIREMENT:

NON-POWER LEVEL JACKS:

LARGE SPANNER WRENCH
LARGE PIPE WRENCH OR CHAIN WRENCH
SMALL PROPANE TORCH

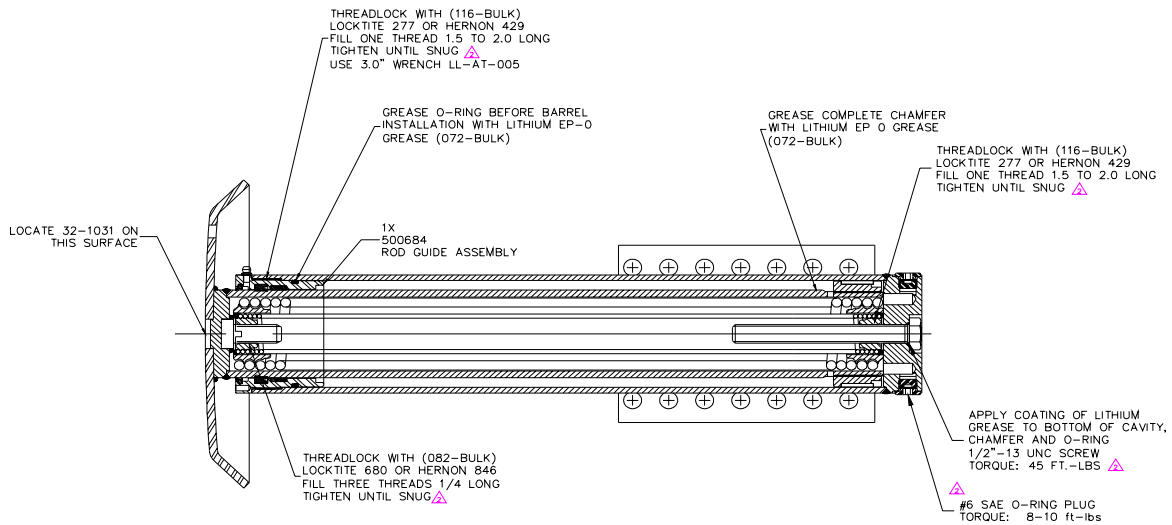
POWER LEVEL JACKS:

1/4" PUNCH
1/8" PUNCH
HAMMER

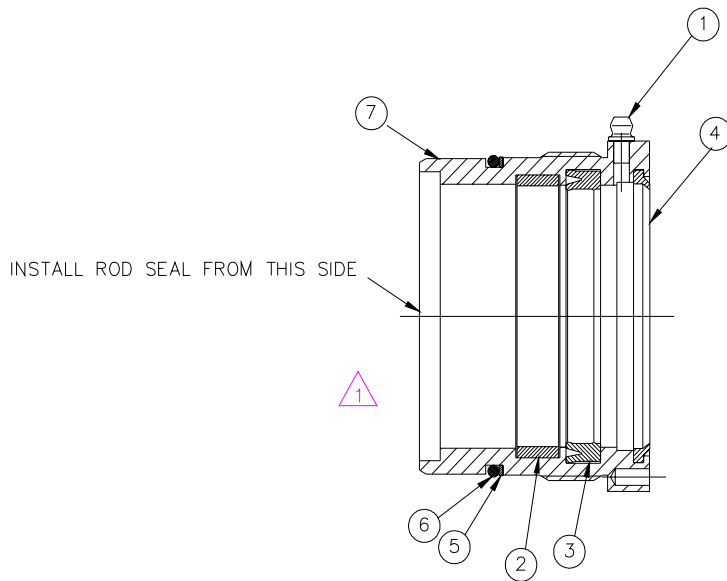
ALL JACKS:

SMALL PICK OR SCREWDRIVER
GREASE GUN
BENCH VISE
15/16" SOCKET
9/16" SOCKET
7 mm SOCKET
IMPACT WRENCH
TORQUE WRENCH
CLEAN SHOP TOWELS
LOCKTITE® 243 OR EQUIVALENT
WIRE BRUSH
SPRAY CLEANING SOLVENT
COMPRESSOR
PNEUMATIC IMPACT WRENCH

INTERNAL SPRING LEGS



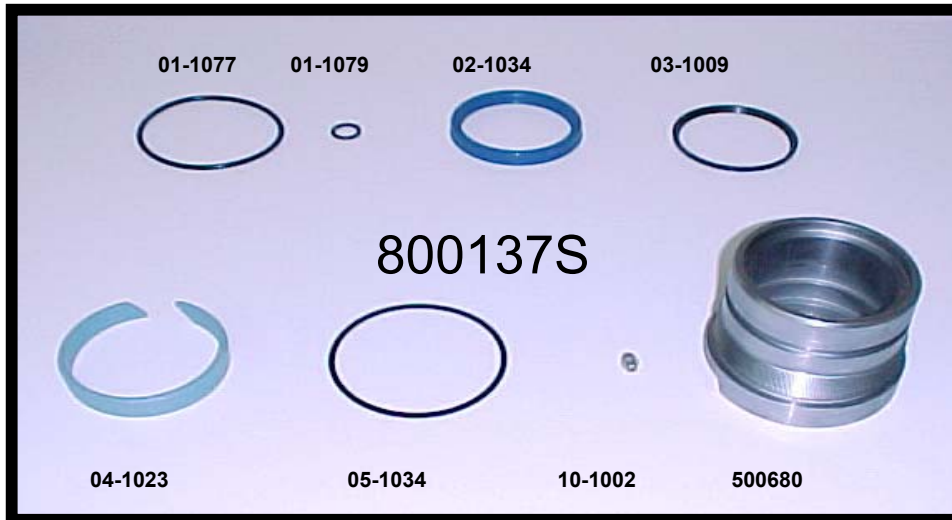
**EXAMPLE OF A TYPICAL
POWER GEAR HYDRAULIC LEG CROSS SECTION
LEG PART NUMBERS - 500070-500145-500386-500620**



7	GUIDE, ROD, 16K JACK	1
6	RING, O, 16K JACK	1
5	WASHER, BACK-UP, 16K JACK	1
4	WIPER, ROD, 16K JACK	1
3	SEAL, ROD, T, 3.00, 16K JACK	1
2	RING, WEAR, ROD, 16K JACK	1
1	GREASE FITTING	1
ITEM	DESCRIPTION	QTY

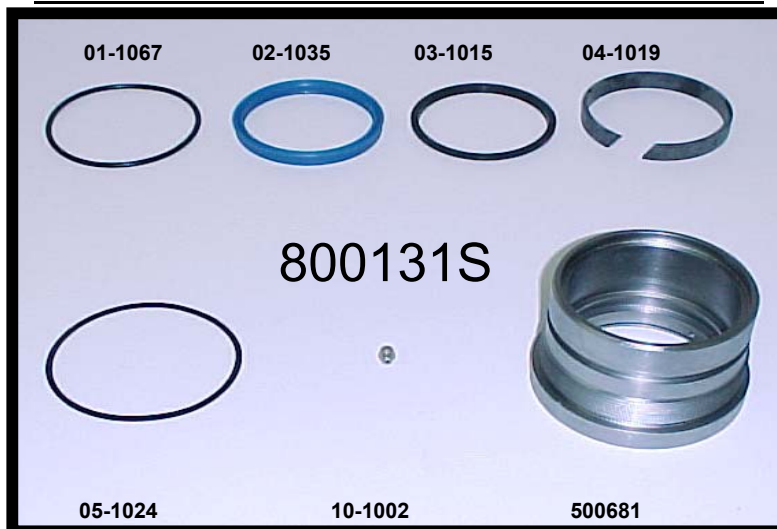
**EXAMPLE OF A TYPICAL
ROD GUIDE CROSS SECTION DETAIL AND ORDER OF ASSEMBLY
LEG PART NUMBERS - 500070-500145-500386-500620**

SEAL REPLACEMENT KIT PART NUMBER - 800137S
FOR 12000 LB. LEG - PART NUMBER 500385



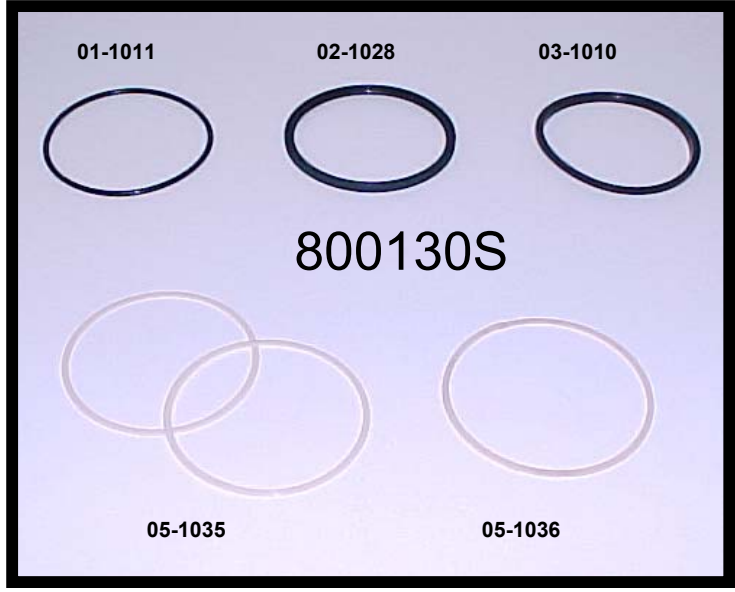
QTY	PART #	DESCRIPTION
1	01-1077	O-RING
1	01-1079	O-RING BUNA-N
1	02-1034	ROD GUIDE SEAL
1	03-1009	12K ROD WIPER
1	04-1023	ROD WEAR RING
1	05-1034	BACK-UP RING
1	10-1002	GREASE FITTING
1	500680	ROD GUIDE
1	02-1030	BOLT SEAL (not shown)

SEAL REPLACEMENT KIT PART NUMBER - 800131S
FOR 16000 LB. LEGS - PART NUMBERS 500070 & 500145



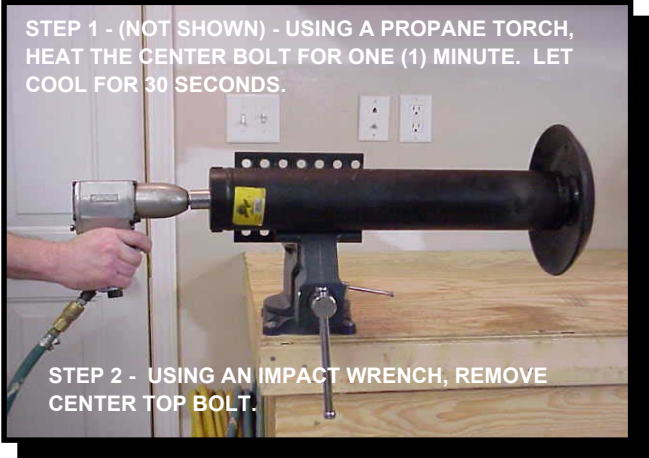
QTY	PART #	DESCRIPTION
1	01-1067	O-RING
1	02-1035	ROD GUIDE SEAL
1	03-1015	16K ROD WIPER
1	04-1019	ROD WEAR RING
1	05-1024	BACK-UP WASHER
1	10-1002	GREASE FITTING
1	500681	ROD GUIDE
1	02-1030	BOLT SEAL (not shown)

SEAL REPLACEMENT KIT PART NUMBER 800130S
FOR 24000 LB. LEGS - PART NUMBERS 500386 & 500620

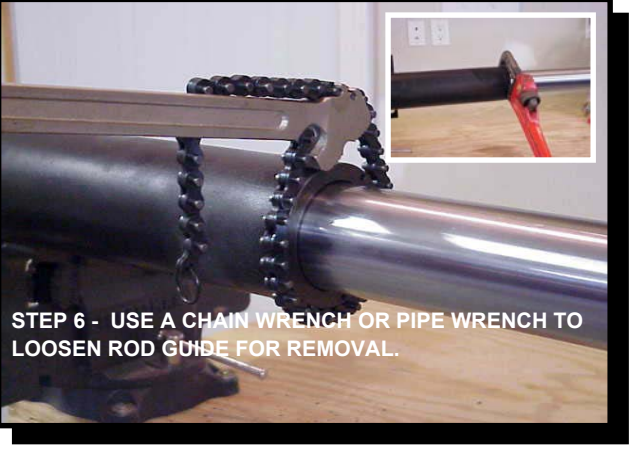


<u>QTY</u>	<u>PART #</u>	<u>DESCRIPTION</u>
1	01-1011	O-RING
1	02-1028	ROD GUIDE T-SEAL
1	03-1010	24K ROD WIPER
1	05-1035	BACK-UP WASHER
1	05-1036	BACK-UP WASHER

NOTE - (NOT SHOWN) PRESSURE WASH THE EXTERIOR OF THE LEG TO PREVENT DIRT FROM CONTAMINATING INTERIOR OF THE LEG DURING THE RE-ASSEMBY PROCESS.

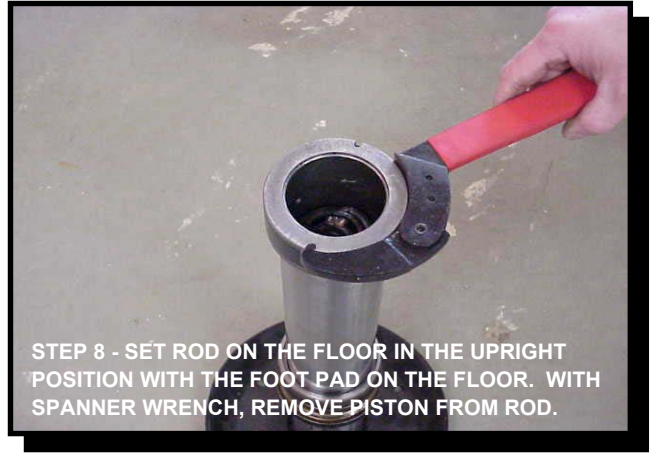


NOTE - IT MAY BE HELPFUL WHEN MOUNTING THIS JACK IN THE VISE TO ELEVATE THE FOOT END. THIS WILL PREVENT REMAINING OIL IN THE CYLINDER FROM DRAINING OUT WHEN THE ROD IS REMOVED.





STEP 7 - REMOVE ROD ASSEMBLY FROM CYLINDER.



STEP 8 - SET ROD ON THE FLOOR IN THE UPRIGHT POSITION WITH THE FOOT PAD ON THE FLOOR. WITH SPANNER WRENCH, REMOVE PISTON FROM ROD.



NOTE - PISTON IS THREADED INTERNALLY AND WILL UNSCREW OFF THE TOP OF THE ROD. PULL ROD GUIDE ASSEMBLY UP AND OFF THE ROD.

IF YOUR SEAL KIT INCLUDES A NEW ROD GUIDE, SKIP TO STEP 12



STEP 9 - WITH PICK TOOL REMOVE EXTERNAL O-RING AND BACK-UP RING FROM ROD GUIDE.



STEP 10 - WITH PICK TOOL REMOVE SEALS AND ANY BACK-UP RINGS.

NOTE - SEAL MAY BE EITHER T-TYPE OR V-TYPE SEAL.



STEP 11 - USING A WIRE BRUSH, CLEAN UP THE THREADS ON THE EXTERIOR OF THE ROD GUIDE. CLEAN THE LOWER INTERNAL PART OF THE ROD GUIDE IF NECESSARY.

NOTE - WIRE BRUSH DOES NOT NEED TO BE PNEUMATIC. ANY WIRE BRUSH CAN BE USED.

BE CAREFUL WHEN CLEANING THE INSIDE OF THE ROD GUIDE. THE SOFTER BEARING MATERIAL CAN BE DAMAGED.



STEP 12- USING A WIRE BRUSH, CLEAN UP THE THREADS ON THE EXTERIOR OF THE ROD WHERE THE PISTON IS THREADED.

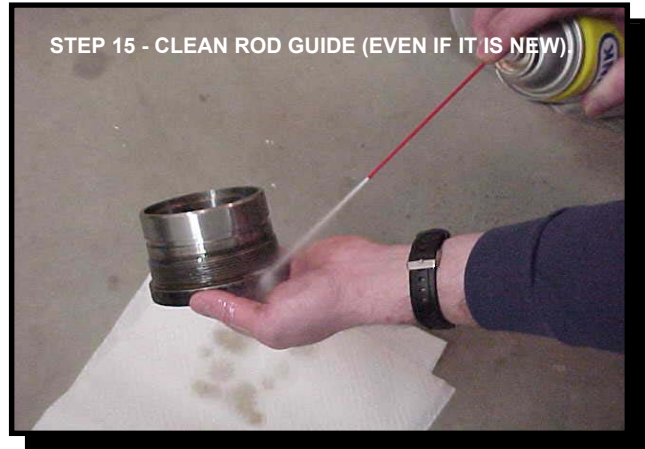


STEP 13 - WITH THE PICK TOOL, REMOVE THE O-RING FROM THE 6 INCH BOLT.

NOTE: STEP 13 SHOWS AN O-RING FOR THE BOLT. ON OLDER JACK LEGS, PART # 500385, A 1/2" BOLT SEAL WAS USED INSTEAD OF AN O-RING. NOTE THE PART #: IF THE PART # READS 500385, WITH NO LETTER SUFFIX, THE SEAL MUST BE USED INSTEAD OF THE O-RING. PLEASE CHECK THE BILL OF MATERIALS ON PAGE 6 FOR THE PART NUMBER OF THE SEAL. THE SEAL WILL BE INCLUDED IN ALL KITS WITH PART # 800137S.



STEP 14- USING A WIRE BRUSH, CLEAN UP THE THREADS ON THE 6 INCH BOLT. INSTALL NEW O-RING.



STEP 15 - CLEAN ROD GUIDE (EVEN IF IT IS NEW)



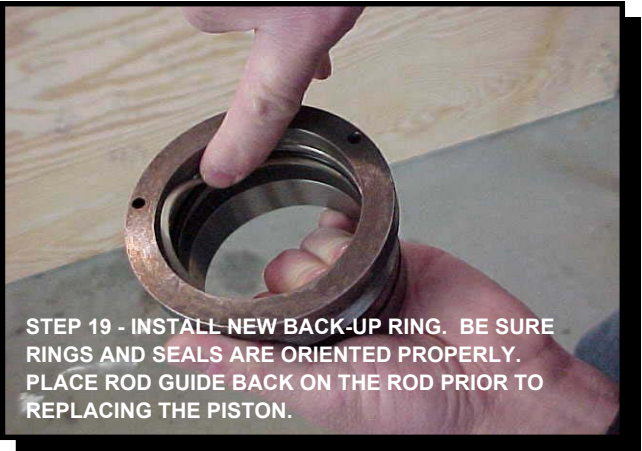
STEP 16- RE-INSTALL GREASE FITTING USING A 7mm SOCKET SLIPPED OVER THE FITTING. SEAT FITTING WITH A HAMMER UNTIL SHOULDER TOUCHES ROD GUIDE.



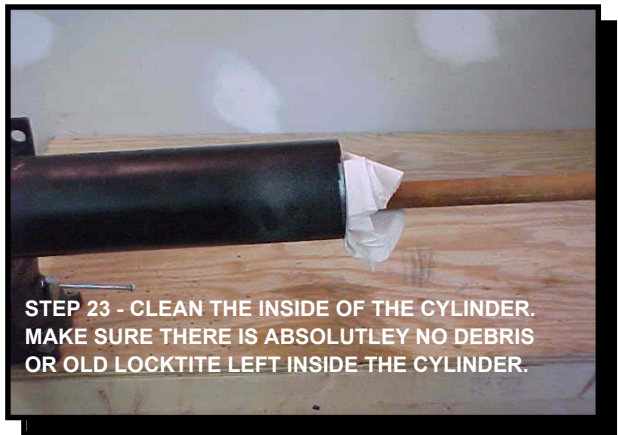
STEP 17 - INSTALL NEW O-RING AND BACK-UP WASHER ON EXTERIOR OF ROD GUIDE.

NOTE - MAKE SURE SEALS ARE INSTALLED IN THE PROPER DIRECTION. SEALS INSTALLED INCORRECTLY WILL CAUSE THE LEG TO FAIL. PLEASE NOTE THE CROSS SECTIONAL DRAWING OF THE ROD GUIDE ON PAGE 4 TO NOTE THE PROPER INSTALLATION OF THE SEALS AND RINGS.

NOTE - CHECK ORDER OF ASSEMBLY ON PAGE 5.

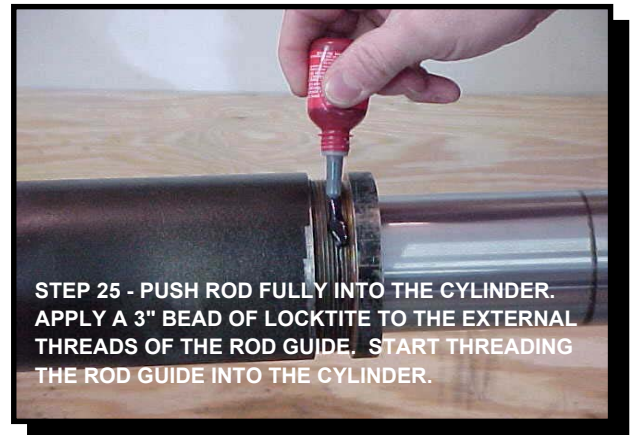


NOTE - GUIDES WITH V-TYPE SEALS DO NOT REQUIRE A BACK-UP RING.





STEP 24 - INSERT THE PISTON BACK INTO THE CYLINDER.



STEP 25 - PUSH ROD FULLY INTO THE CYLINDER. APPLY A 3" BEAD OF LOCKTITE TO THE EXTERNAL THREADS OF THE ROD GUIDE. START THREADING THE ROD GUIDE INTO THE CYLINDER.



STEP 26- USING THE CHAIN WRENCH, TIGHTEN ROD GUIDE INTO CYLINDER.

NOTE - NOTICE IN THE INSET PICTURE THAT THE ROD GUIDE IS SEATED SNUGLY TO THE CYLINDER.

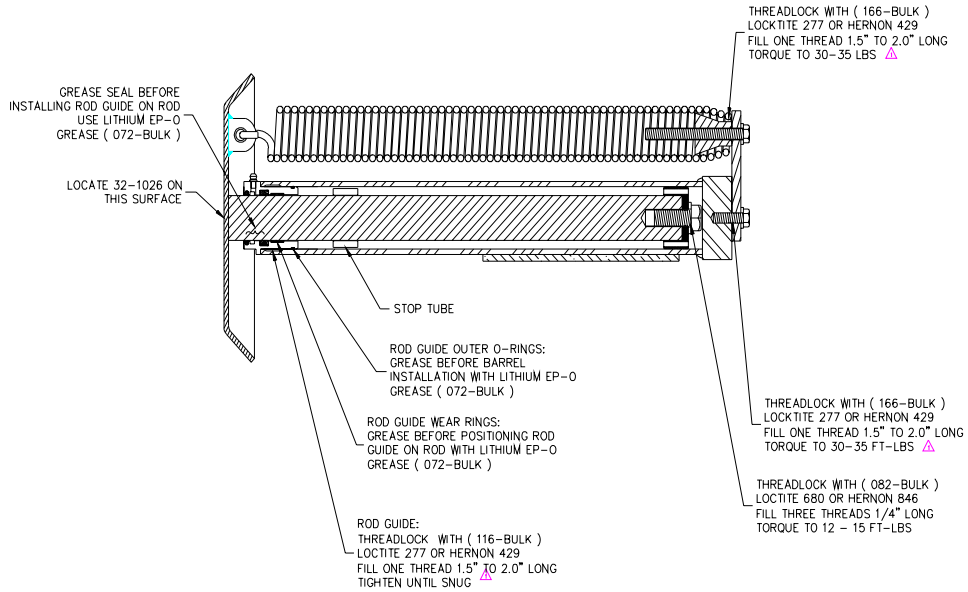


STEP 27 - (NOT SHOWN) APPLY 2" OF LOCKTITE TO THE THREADS IN THE MIDDLE OF THE 6"

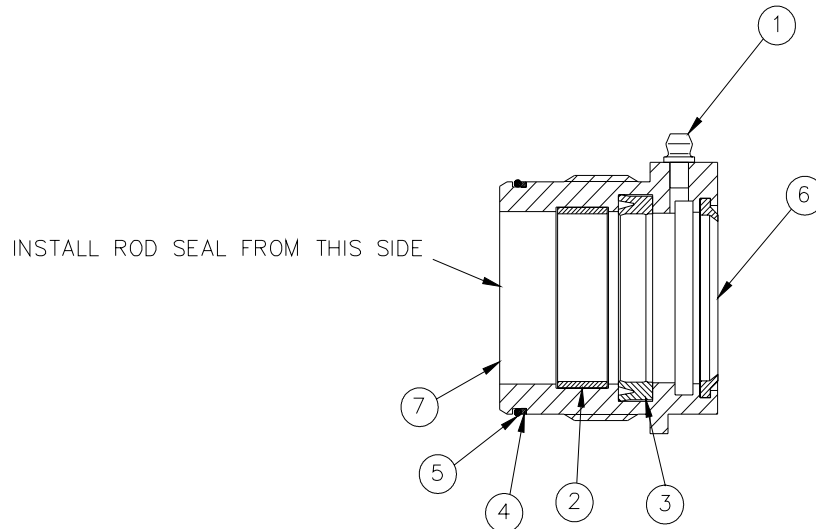
STEP 28- INSTALL THE BOLT AND TIGHTEN. TORQUE TO 45 FT/LB.

NOTE - FILL THE GREASE SLOT ON THE ROD GUIDE. 2-3 PUMPS FROM A GREASE GUN WILL BE SUFFICIENT. RE-INSTALL LEG ON THE COACH AND TEST TO OPERATE. FLUSH AND REFILL THE HYDRAULIC SYSTEM WITH FRESH FLUID (DEXTRON III). CYCLE EACH LEG 2-3 TIMES AFTER FILLING RESERVOIR TO PURGE AIR FROM THE SYSTEM AND PUSH THE FLUID THROUGH THE LINES. BE SURE TO CHECK FLUID LEVEL AFTER EACH CYCLE OF THE LEGS.

EXTERNAL SPRING LEGS

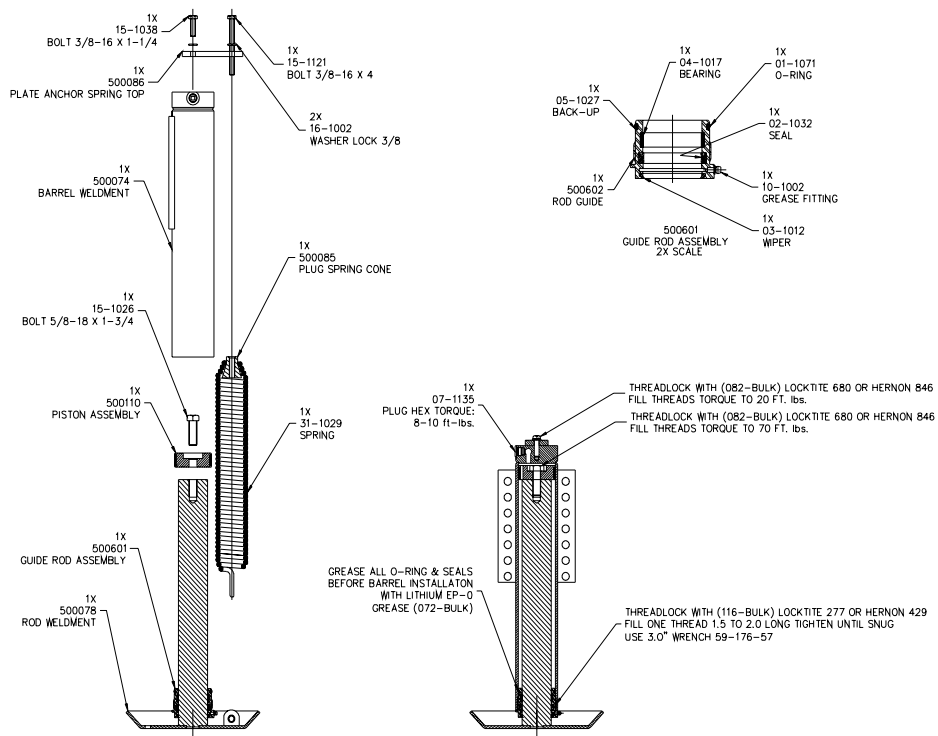


**EXAMPLE OF A TYPICAL
POWER GEAR HYDRAULIC LEG CROSS SECTION
LEG PART NUMBER - 500384**

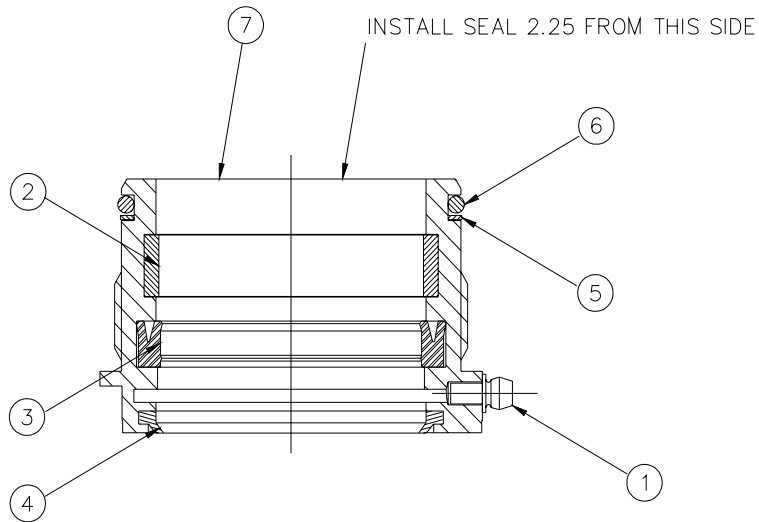


7	GUIDE, ROD, 6K JACK	1
6	WIPER, ROD, 6K JACK	1
5	RING, O, 2.25 O.D. 6K JACK	1
4	WASHER, BACK-UP, 2.25 6K JACK	1
3	SEAL, ROD, 1.625, 6K JACK	1
2	RING, WEAR, ROD, 6K JACK	1
1	GREASE FITTING	1
ITEM	DESCRIPTION	QTY

**EXAMPLE OF A TYPICAL
ROD GUIDE CROSS SECTION DETAIL AND ORDER OF ASSEMBLY
LEG PART NUMBER - 500384**



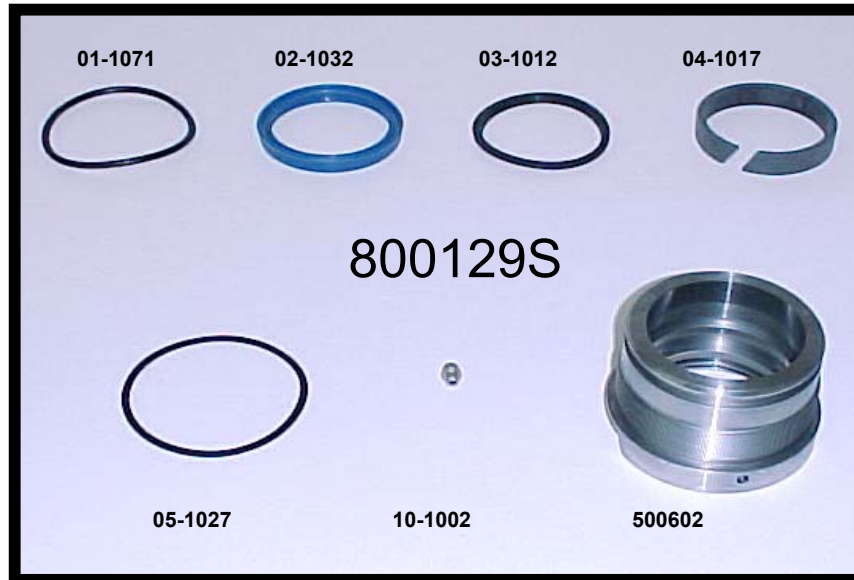
**EXAMPLE OF A TYPICAL
POWER GEAR HYDRAULIC LEG CROSS SECTION
LEG PART NUMBERS - 500082-500146-500272-500235-500384-500482**



7	9K ROD GUIDE	1
6	O-RING	1
5	BACK-UP RING	1
4	WIPER, ROD 2.25	1
3	SEAL, 2.25 ROD	1
2	WEAR BEARING 2.25 ROD	1
1	GREASE FITTING	1
ITEM #	DESCRIPTION	QTY

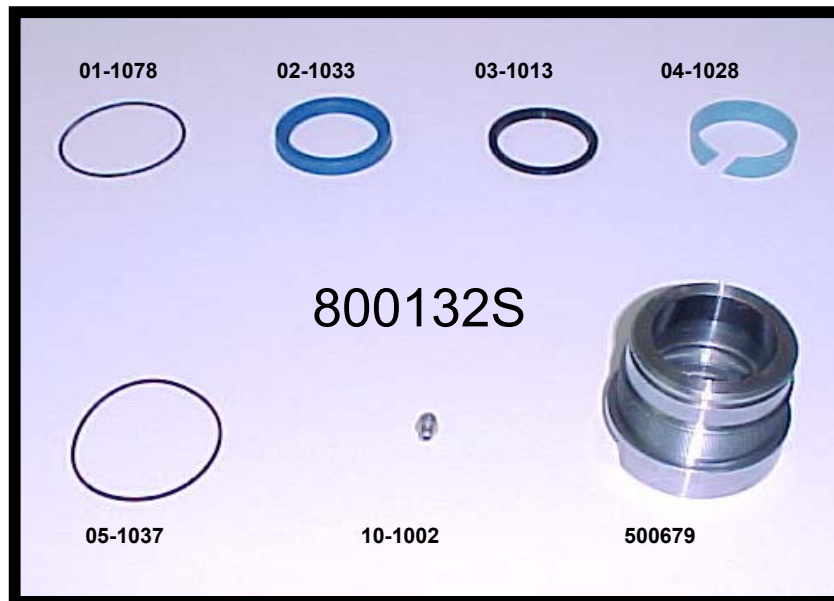
**EXAMPLE OF A TYPICAL
ROD GUIDE CROSS SECTION DETAIL AND ORDER OF ASSEMBLY
LEG PART NUMBERS - 500082-500146-500272-500235-500384-500482**

SEAL REPLACEMENT KIT PART NUMBER - 800129S
FOR 9000 LB. LEGS - PART NUMBERS 500082 - 500146 - 500235 - 500272



QTY	PART #	DESCRIPTION
1	01-1071	O-RING
1	02-1032	UCUP ROD GUIDE SEAL
1	03-1012	9K ROD WIPER
1	04-1017	ROD WEAR RING
1	05-1027	BACK-UP WASHER
1	10-1002	GREASE FITTING
1	500602	ROD GUIDE

SEAL REPLACEMENT KIT PART NUMBER - 800132S
FOR 6000 LB. LEGS(2001-present only) - PART NUMBERS 500384 & 500482

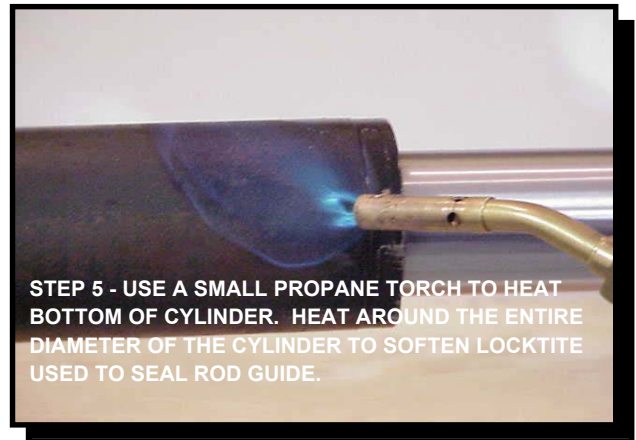


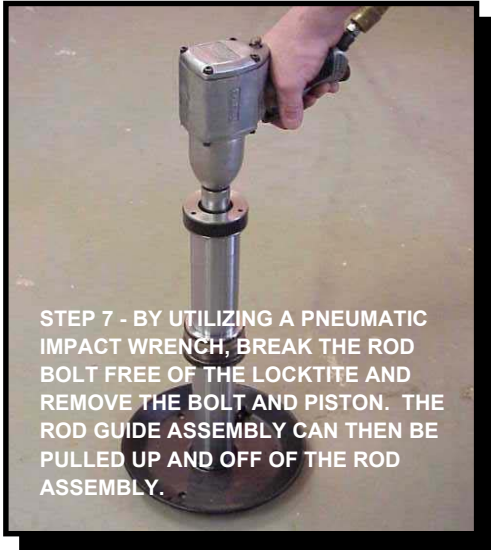
QTY	PART #	DESCRIPTION
1	01-1078	O-RING
1	02-1033	ROD GUIDE SEAL
1	03-1013	6K ROD WIPER
1	04-1028	ROD WEAR RING
1	05-1037	BACK-UP RING
1	10-1002	GREASE FITTING
1	500679	ROD GUIDE
1	500497	GUIDE, PISTON

STEP 1 - (NOT SHOWN) PRESSURE WASH THE EXTERIOR OF THE LEG TO PREVENT DIRT FROM CONTAMINATING INTERIOR OF THE LEG DURING THE REASSEMBLY PROCESS.



NOTE - IT MAY BE HELPFUL WHEN MOUNTING THIS JACK IN THE VISE TO ELEVATE THE FOOT END. THIS WILL PREVENT REMAINING OIL IN THE CYLINDER FROM DRAINING OUT WHEN THE ROD IS REMOVED.



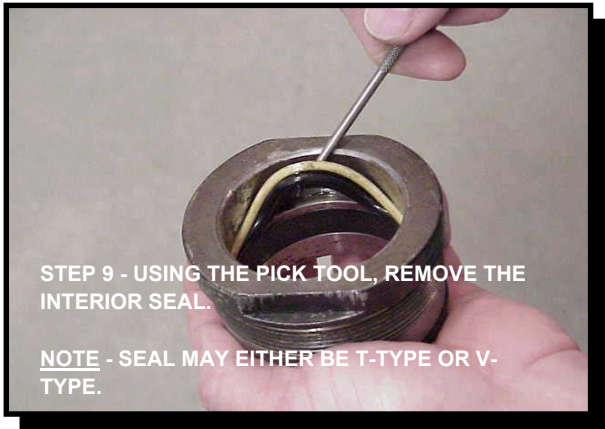


STEP 7 - BY UTILIZING A PNEUMATIC IMPACT WRENCH, BREAK THE ROD BOLT FREE OF THE LOCKTITE AND REMOVE THE BOLT AND PISTON. THE ROD GUIDE ASSEMBLY CAN THEN BE PULLED UP AND OFF OF THE ROD ASSEMBLY.

SKIP TO STEP 11 IF YOU ARE SUPPLIED WITH A NEW ROD GUIDE.



STEP 8 - WITH PICK TOOL REMOVE EXTERIOR O-RING AND BACK-UP WASHER



STEP 9 - USING THE PICK TOOL, REMOVE THE INTERIOR SEAL.

NOTE - SEAL MAY EITHER BE T-TYPE OR V-TYPE.

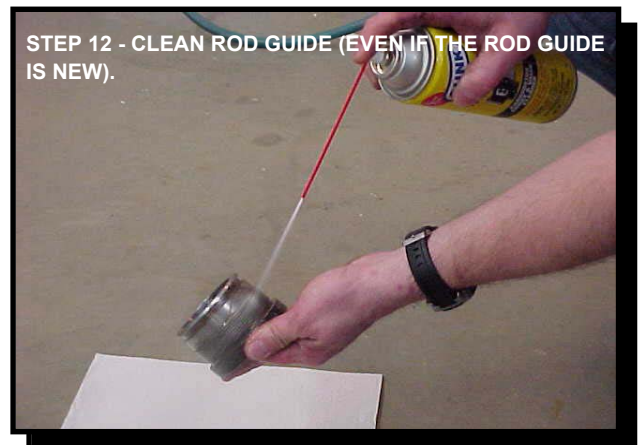


STEP 10 - USING A WIRE BRUSH, CLEAN UP THE THREADS ON THE EXTERIOR OF THE ROD GUIDE. BE SURE TO CLEAN THE INSIDE OF THE ROD GUIDE OF ANY RUST OR DEBRIS.

NOTE - MAKE SURE SEALS ARE INSTALLED IN THE PROPER DIRECTION. SEALS INSTALLED INCORRECTLY WILL CAUSE THE LEG TO FAIL. PLEASE NOTE THE CROSS SECTIONAL DRAWING OF THE ROD GUIDE ON PAGES 12 AND 13 TO NOTE THE PROPER INSTALLATION OF THE SEALS AND RINGS.



STEP 11 - USING A WIRE BRUSH, CLEAN UP THE THREADS ON THE ROD BOLT.



STEP 12 - CLEAN ROD GUIDE (EVEN IF THE ROD GUIDE IS NEW).

NOTE - WIRE BRUSH DOES NOT NEED TO BE PNEUMATIC. ANY WIRE BRUSH CAN BE USED. BE CAREFUL NOT TO DAMAGE THE SOFT BEARING MATERIAL.

NOTE - CHECK ORDER OF ASSEMBLY ON PAGES 13 AND 14.

STEP 13 - RE-INSTALL GREASE FITTING USING A 7mm SOCKET SLIPPED OVER THE FITTING. SEAT FITTING WITH HAMMER UNTIL SHOULDER TOUCHES ROD GUIDE.



STEP 14- INSTALL O-RING AND BACK-UP WASHER. BE SURE THE O-RING AND THE WASHER ARE IN THE PROPER SEQUENCE.

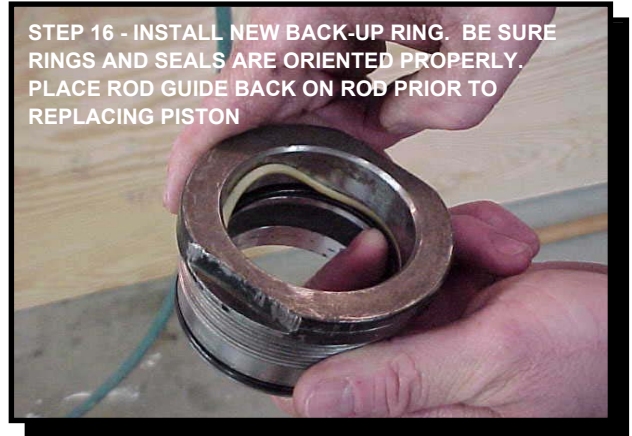


STEP 15 - INSTALL NEW SEAL. BE SURE THE SEAL IS PROPERLY ORIENTED. NEW ROD GUIDES WILL HAVE "V" TYPE SEALS.

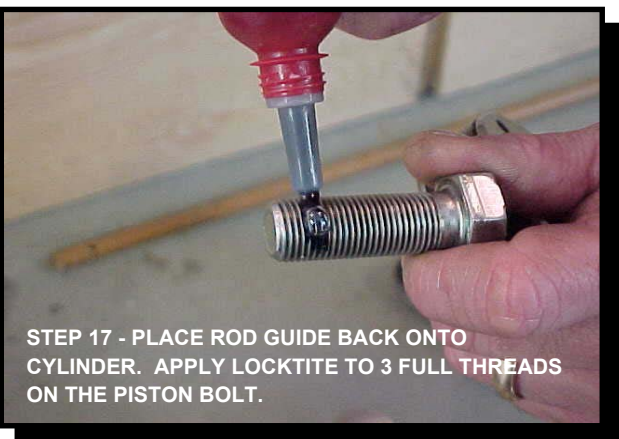


NOTE - CLEAN ROD AND LUBRICATE IT WITH DEXTRON III.

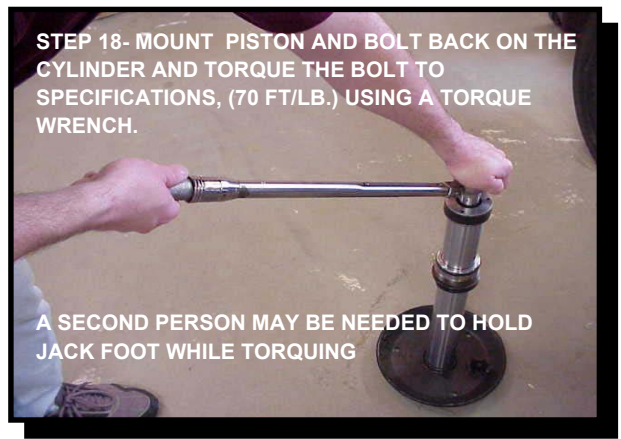
STEP 16 - INSTALL NEW BACK-UP RING. BE SURE RINGS AND SEALS ARE ORIENTED PROPERLY. PLACE ROD GUIDE BACK ON ROD PRIOR TO REPLACING PISTON



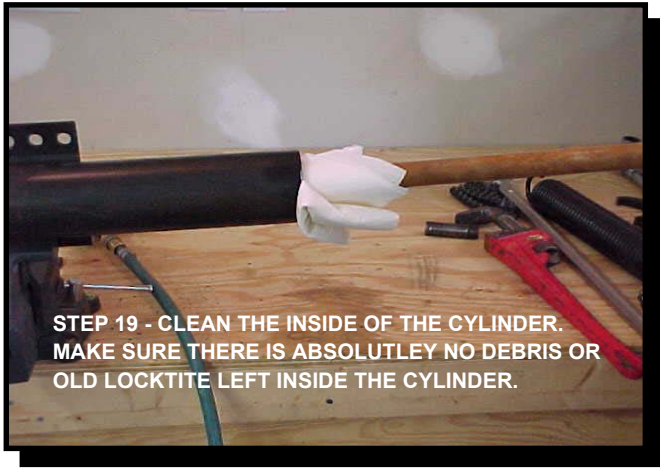
STEP 17 - PLACE ROD GUIDE BACK ONTO CYLINDER. APPLY LOCKTITE TO 3 FULL THREADS ON THE PISTON BOLT.



STEP 18- MOUNT PISTON AND BOLT BACK ON THE CYLINDER AND TORQUE THE BOLT TO SPECIFICATIONS, (70 FT/LB.) USING A TORQUE WRENCH.



A SECOND PERSON MAY BE NEEDED TO HOLD JACK FOOT WHILE TORQUING



STEP 19 - CLEAN THE INSIDE OF THE CYLINDER. MAKE SURE THERE IS ABSOLUTLEY NO DEBRIS OR OLD LOCKTITE LEFT INSIDE THE CYLINDER.



STEP 20 - INSERT THE ROD ASSEMBLY BACK INTO THE CYLINDER.



STEP 21 - APPLY A 2" BEAD OF LOCKTITE TO THE ROD GUIDE THREADS.



STEP 22 - THREAD THE ROD GUIDE INTO THE CYLINDER AND TIGHTEN UNTIL SNUG.



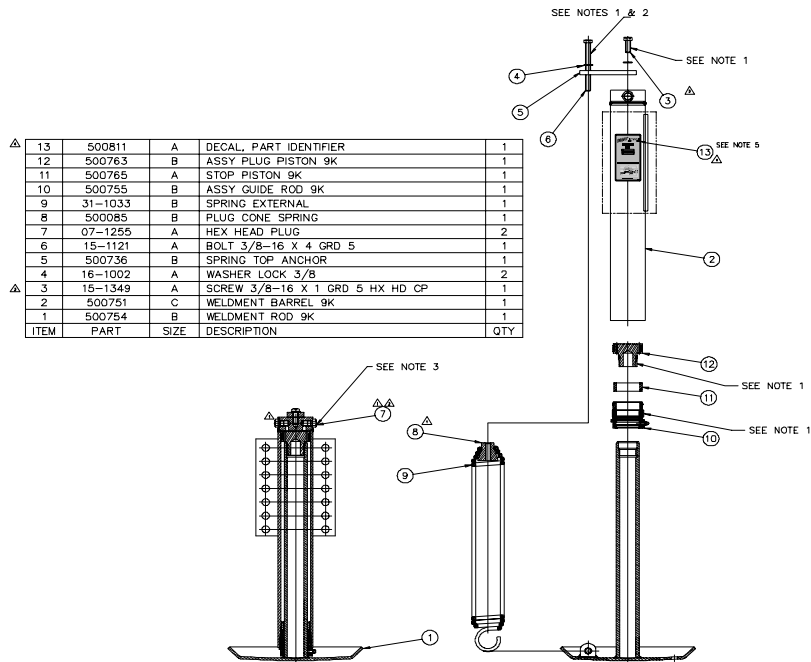
STEP 23 - FILL 3 THREADS ON THE BRACKET BOLT WITH LOCKTITE AND TORQUE TO 20 FT/LB.



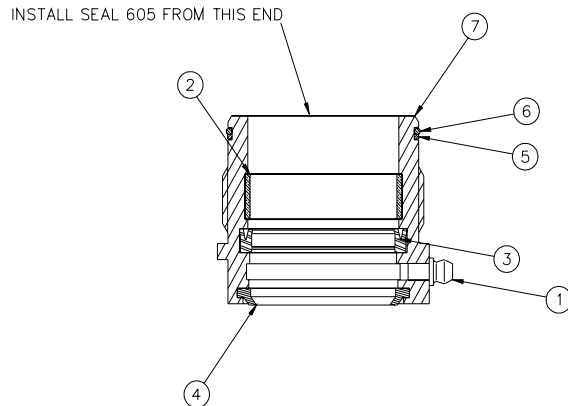
STEP 24 - REASSEMBLE SPRING AND BRACKET. INSTALL JACK ONTO COACH AND TEST.

NOTE - FILL THE GREASE SLOT ON THE ROD GUIDE. 2-3 PUMPS FROM A GREASE GUN WILL BE SUFFICIENT. RE-INSTALL LEG ON THE COACH AND TEST TO OPERATE. FLUSH AND REFILL THE HYDRAULIC SYSTEM WITH FRESH FLUID (DEXTRON III). CYCLE EACH LEG 2-3 TIMES AFTER FILLING RESERVOIR TO PURGE AIR FROM THE SYSTEM AND PUSH THE FLUID THROUGH THE LINES. BE SURE TO CHECK FLUID LEVEL AFTER EACH CYCLE OF THE LEGS.

POWER LEVEL HYDRAULIC LEGS

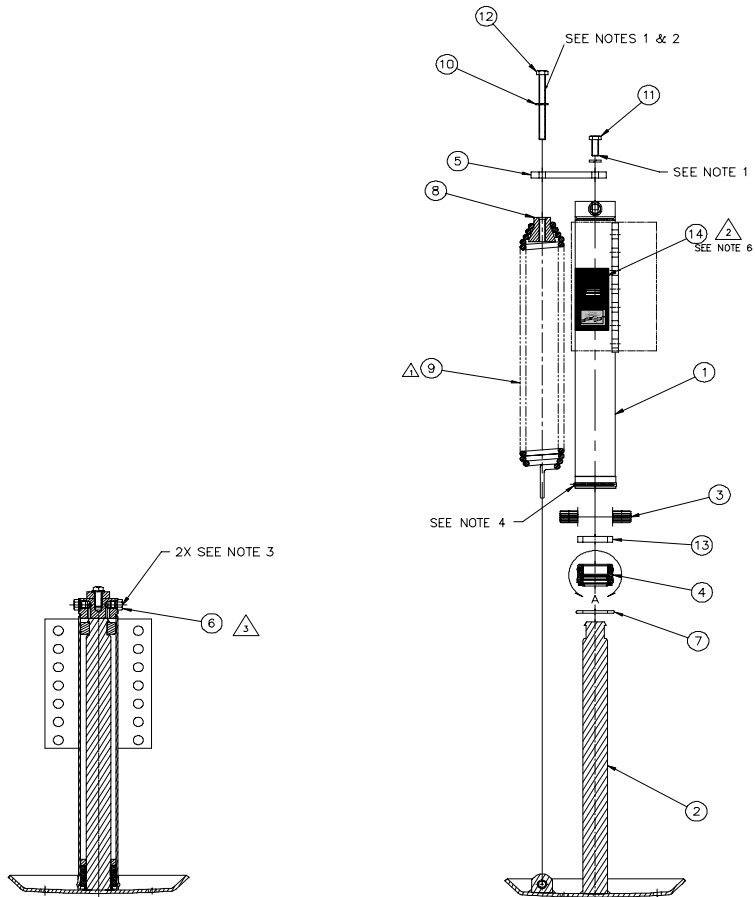


**EXAMPLE OF A TYPICAL
POWER GEAR POWER LEVEL HYDRAULIC LEG CROSS SECTION DETAIL
LEG PART NUMBERS - 500759-500833-500843**

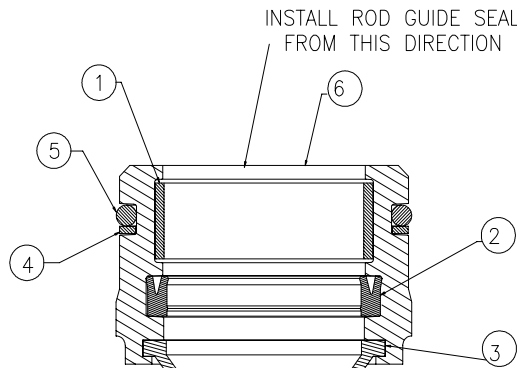


ITEM	DESCRIPTION	QTY
7	ROD GUIDE 1.75 ROD HOLLOW	1
6	O-RING 2.25 O.D. 9K-LW JACK	1
5	BACK-UP WASHER 2.25 9K LW JACK	1
4	WIPER, ROD, 9K-LW JACK 1.75 DIA.	1
3	SEAL 605 1.75	1
2	WEAR RING 1.75 DIA. ROD	1
1	GREASE FITTING	1

**EXAMPLE OF A TYPICAL
ROD GUIDE CROSS SECTION DETAIL AND ORDER OF ASSEMBLY
LEG PART NUMBERS - 500759-500833-500843**



**EXAMPLE OF A TYPICAL
POWER GEAR POWER LEVEL HYDRAULIC LEG CROSS SECTION DETAIL
LEG PART NUMBERS - 500730-500832-500842**



6	6K ROD GUIDE	1
5	O-RING	1
4	BACK-UP WASHER	1
3	ROD WIPER 1.375	1
2	ROD GUIDE SEAL	1
1	WEAR RING 1.375	1
ITEM#	DESCRIPTION	QTY

**EXAMPLE OF A TYPICAL
ROD GUIDE CROSS SECTION DETAIL
LEG PART NUMBERS - 500730-500832-500842**

SEAL REPLACEMENT KIT PART NUMBER - 800133S

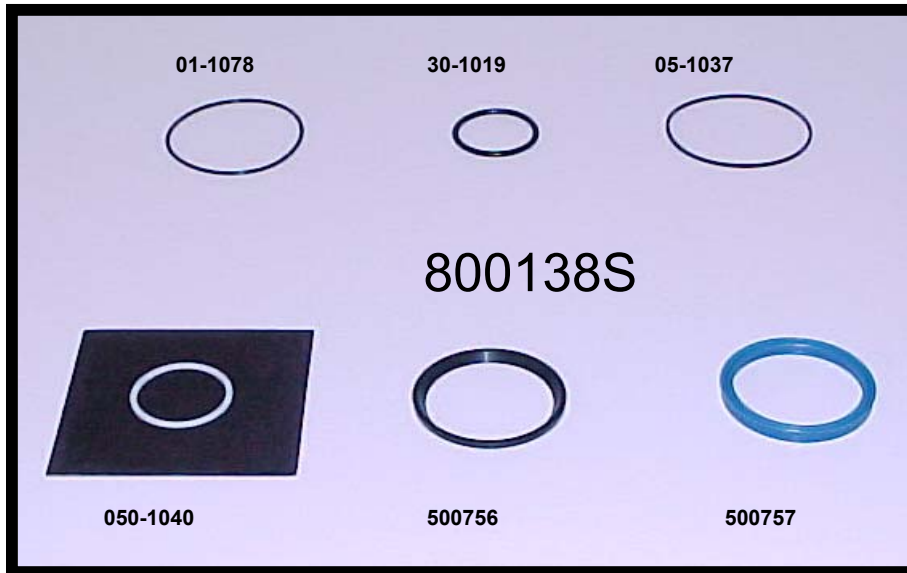
FOR 6000 LB. POWER LEVEL LEGS - PART NUMBERS 500730 - 500832 - 500842 - 500933



<u>QTY</u>	<u>PART #</u>	<u>DESCRIPTION</u>
1	A8121049	RETAINING RING
1	01-1009	O-RING
1	05-1020	STATIC BACK-UP WASHER
2	500734	6K LEVELING JACK PISTON
1	500739	6K NYLON STOP PISTON
1	500746	ROD GUIDE SEAL
1	500747	WEAR RING
1	500748	ROD WIPER

SEAL REPLACEMENT KIT PART NUMBER - 800138S

FOR 9000 LB. POWER LEVEL LEGS PART NUMBERS 500759 - 500833 - 500843 - 500932



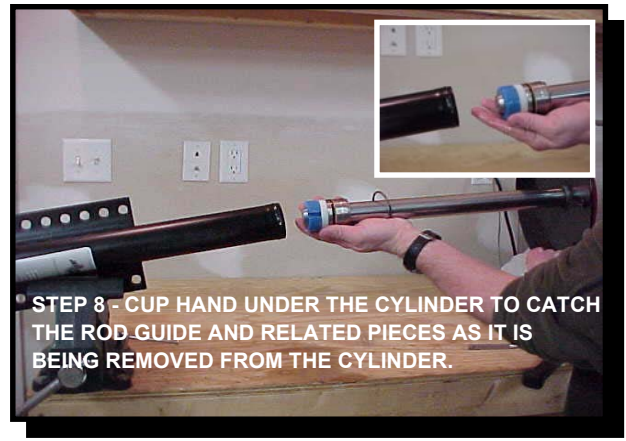
<u>QTY</u>	<u>PART #</u>	<u>DESCRIPTION</u>
1	01-1078	O-RING
1	030-1019	DUROMETER O-RING
1	050-1040	TEFLON BACK-UP RING
1	05-1037	BACK-UP RING
1	500756	ROD GUIDE SEAL
1	500757	ROD WIPER

STEP 1 - (NOT SHOWN) PRESSURE WASH THE EXTERIOR OF THE LEG TO PREVENT DIRT FROM CONTAMINATING INTERIOR OF THE LEG DURING THE REASSEMBLY PROCESS.





STEP 7 - WHILE PRESSING IN ON THE RETAINING RING, USING A SMALL SCREWDRIVER, PRY THE RETAINING RING OUT.



STEP 8 - CUP HAND UNDER THE CYLINDER TO CATCH THE ROD GUIDE AND RELATED PIECES AS IT IS BEING REMOVED FROM THE CYLINDER.



STEP 9 - REMOVE PLASTIC PISTON FROM END OF ROD. PISTON WILL COME OFF IN TWO PIECES.



STEP 10 - USE A SUITABLE TOOL TO REMOVE BOTH SEALS FROM THE ROD GUIDE.



NOTE - REMOVAL OF ROD WIPER MAY REQUIRE THE USE OF A PICK-TYPE TOOL AND A SMALL FLAT SCREWDRIVER.



STEP 11 - AFTER CLEANING ROD GUIDE, (NOT SHOWN), INSTALL NEW SEALS AND RINGS.

NOTE - MAKE SURE SEALS ARE INSTALLED IN THE PROPER DIRECTION. SEALS INSTALLED INCORRECTLY WILL CAUSE THE LEG TO FAIL. PLEASE NOTE THE CROSS SECTIONAL DRAWING OF THE ROD GUIDE ON PAGES 20 AND 21 TO NOTE THE PROPER INSTALLATION OF THE SEALS AND RINGS.

NOTE - BE SURE BACK-UP AND O-RINGS ARE ORIENTED CORRECTLY AND IN THE PROPER ORDER ON THE ROD GUIDE. REFER TO CROSS SECTION DETAIL OF ROD GUIDE AT BEGINNING OF THIS SECTION.



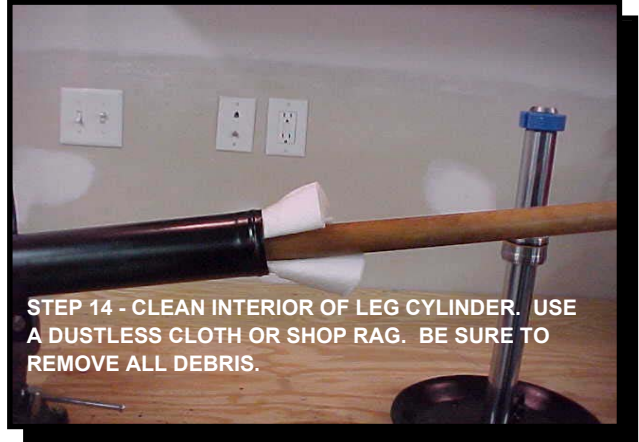
STEP 12 - INSTALL ROD SEAL. MAKE SURE SEAL IS ORIENTED PROPERLY. FAILURE TO DO SO WILL CAUSE THE LEG TO FAIL!



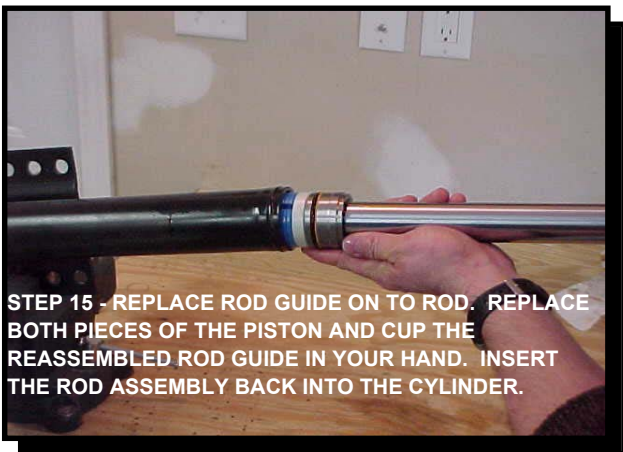
STEP 13 - INSTALL WIPER SEAL. MAKE SURE SEAL IS ORIENTED PROPERLY. FAILURE TO DO SO WILL CAUSE THE LEG TO FAIL.



STEP 14 - CLEAN INTERIOR OF LEG CYLINDER. USE A DUSTLESS CLOTH OR SHOP RAG. BE SURE TO REMOVE ALL DEBRIS.



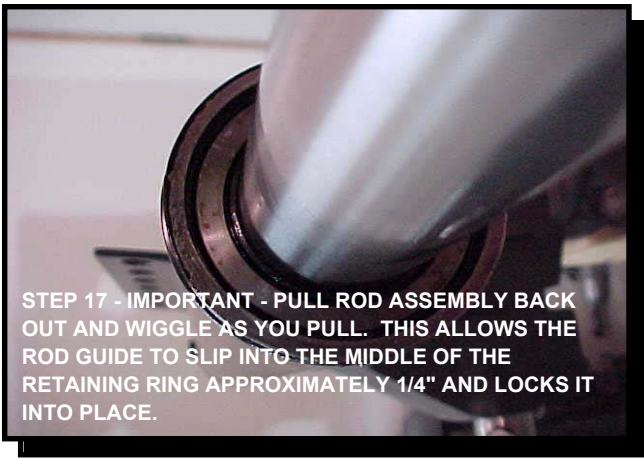
STEP 15 - REPLACE ROD GUIDE ON TO ROD. REPLACE BOTH PIECES OF THE PISTON AND CUP THE REASSEMBLED ROD GUIDE IN YOUR HAND. INSERT THE ROD ASSEMBLY BACK INTO THE CYLINDER.



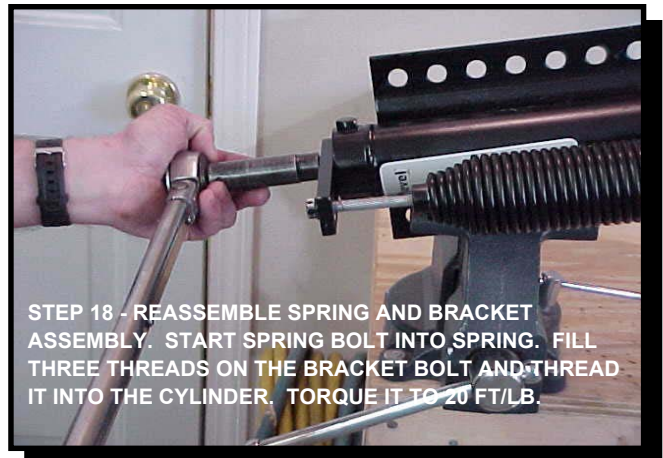
STEP 16 - REPLACE RETAINING RING IN THE EXACT SPOT FROM WHICH IT WAS REMOVED. MAKE SURE PUNCH HOLE IS NOT SETTING IN THE RETAINING RING'S GAP.



NOTE - MAKE SURE SEALS ARE INSTALLED IN THE PROPER DIRECTION. SEALS INSTALLED INCORRECTLY WILL CAUSE THE LEG TO FAIL. PLEASE NOTE THE CROSS SECTIONAL DRAWING OF THE ROD GUIDE ON PAGES 19 AND 20 TO NOTE THE PROPER INSTALLATION OF THE SEALS AND RINGS.



STEP 17 - IMPORTANT - PULL ROD ASSEMBLY BACK OUT AND WIGGLE AS YOU PULL. THIS ALLOWS THE ROD GUIDE TO SLIP INTO THE MIDDLE OF THE RETAINING RING APPROXIMATELY 1/4" AND LOCKS IT INTO PLACE.



STEP 18 - REASSEMBLE SPRING AND BRACKET ASSEMBLY. START SPRING BOLT INTO SPRING. FILL THREE THREADS ON THE BRACKET BOLT AND THREAD IT INTO THE CYLINDER. TORQUE IT TO 20 FT/LB.



STEP 19 - FINISH THREADING THE SPRING BOLT UNTIL TIGHT. INSTALL JACK ON COACH AND TEST.

NOTE - RE-INSTALL LEG ON THE COACH AND TEST TO OPERATE. FLUSH AND REFILL THE HYDRAULIC SYSTEM WITH FRESH FLUID (DEXTRON III). CYCLE EACH LEG 2-3 TIMES AFTER FILLING RESERVOIR TO PURGE AIR FROM THE SYSTEM AND PUSH THE FLUID THROUGH THE LINES. BE SURE TO CHECK FLUID LEVEL AFTER EACH CYCLE OF THE LEGS.



1217 E. 7TH St.
Mishawaka, IN 46544
(888) 339-2537